

DAVID SCHMIDT
Chief Economist



STEVE SISOLAK
Governor

ELISA CAFFERATA
Director

Nevada Statewide & Metro Area Labor Market Overview

October 2021

Published on November 18, 2021

Overall employment continued to grow in October 2021 with Nevada adding 11,200 jobs since September. This growth was spread across many of the industries in Nevada, with a few experiencing a decline. For example, the professional and business services industry added 4,200 jobs for a growth rate of 2.1 percent; the education and health services industry added 3,100 jobs with a growth rate of 2.1 percent. The industry with the biggest growth rate was other services with a growth rate of 2.8 percent and 1,200 jobs added. Of the industries with a decline in jobs, the largest was government with 800 jobs fewer over the month September.

All of the state's metropolitan areas (MSA) experienced growth in October. The Las Vegas MSA added 8,400 jobs, growing at 0.9 percent. The Reno MSA grew by 1,300 jobs or 0.5 percent while the Carson City area saw an increase of 200 jobs or 0.7 percent.

The state's unemployment rate dropped to 7.3 percent this month down from 7.5 percent the previous month. This is likely to remain one of the highest unemployment rates in the nation and is reflective of the long road left to a complete recovery. However, this rate is down considerably from 12 percent in October 2020.

Although Nevada continues to see improvement in the labor market, there are still significant hurdles in achieving a full recovery in the state, especially the uncertainty around new COVID-19 variants and their potential impacts on businesses and the labor force.

Information on how to file an unemployment insurance or pandemic unemployment assistance claim, where to get updates from DETR, or what other services are available from the department can be found at the end of this write-up. Additional labor market information can be found on our website (<http://nevadaworkforce.com/>).

October 2021 Seasonally Adjusted Employment Summary (in thousands)

Area	Current Month	Previous Month	Monthly Change	M/M Growth	Previous Year	Annual Change	Y/Y Growth
Nevada	1,363.9	1,352.7	11.2	0.8%	1,267.2	96.7	7.6%
Carson City MSA	30.8	30.6	0.2	0.7%	29.6	1.2	4.1%
Las Vegas - Paradise MSA	975.1	966.7	8.4	0.9%	898.4	76.7	8.5%
Reno - Sparks MSA	249.1	247.8	1.3	0.5%	237.7	11.4	4.8%

October 2021 Not Seasonally Adjusted Employment Summary (in thousands)

Area	Current Month	Previous Month	Monthly Change	M/M Growth	Previous Year	Annual Change	Y/Y Growth
Nevada	1,376.2	1,358.3	17.9	1.3%	1,280.1	96.1	7.5%
Carson City MSA	31.0	30.7	0.3	1.0%	29.8	1.2	4.0%
Las Vegas - Paradise MSA	982.5	969.8	12.7	1.3%	905.7	76.8	8.5%
Reno - Sparks MSA	251.4	248.5	2.9	1.2%	240.3	11.1	4.6%

Current Employment Statistics ([CES](#))

Estimates for this section come from the Current Employment Statistics (CES) program sponsored by the Bureau of Labor statistics ([BLS](#)). Total nonfarm employment increased by 11,200 jobs from September to October, a growth rate of 0.8%. Since October 2020, total nonfarm employment increased by 96,700 jobs, or 7.6%. The largest employment increases in October, occurred in leisure and hospitality and retail trade. For more state employment information, please visit our [Nevada Area Profile](#).

Las Vegas MSA seasonally adjusted total nonfarm employment realized an increase of 8,400 jobs (0.9%) from September to October. Compared to October 2020, total nonfarm employment saw an increase of 76,700 jobs (8.5%). Sector estimates are not adjusted for seasonality. To see more employment information, please visit our [Las Vegas Area Profile](#).

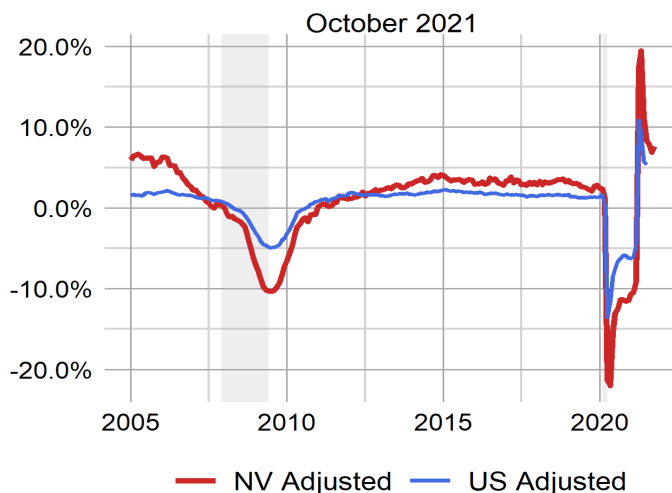
Reno MSA seasonally adjusted total nonfarm employment realized an increase of 1,300 jobs (0.5%) from September to October. Compared to October 2020, total nonfarm employment saw an increase of 11,400 jobs (4.8%). Sector estimates are not adjusted for seasonality. For additional employment information, please visit our [Reno Area Profile](#).

Carson City MSA seasonally adjusted total nonfarm employment realized an increase of 200 jobs (0.7%) from September to October. Compared to October 2020, total nonfarm employment saw an increase of 1,200 jobs (4.1%). Sector estimates are not adjusted for seasonality. For more employment information, please visit our [Carson City Area Profile](#).

For more information visit our [CES Page](#), see the summary tables at the end of the document, or check out our dashboards for a [CES summary](#) or [industry estimates](#) or all the [Area Profiles](#).

See more summary information on [Nevada's Labor Market](#) and the [U.S. Labor Market](#).

Nevada vs U.S. Employment Growth

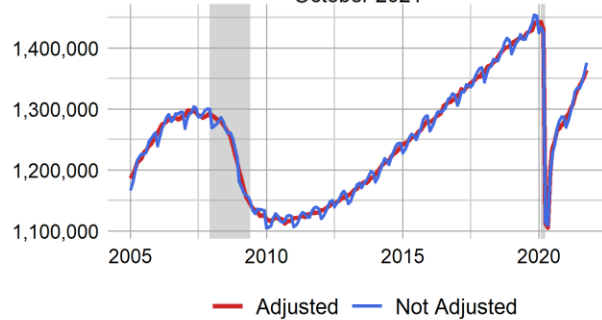


Nevada & Area Seasonally Adjusted Employment Summary in (1000s)

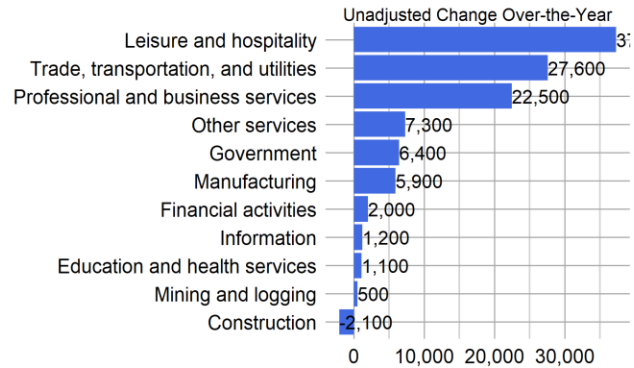
areaname	Value	Change	1-Yr High	1-Yr Low	1-Yr High Chg	1-Yr Low Chg	3-Yr High	3-Yr Low	3-Yr High Chg	3-Yr Low Chg	All-Time High	All-Time Min
Nevada	1,363.9	11.2	1,363.9	1,267.2	12.4	2.0	1,442.8	1,105.7	91.6	-318.6	1,442.8	609.8
Las Vegas - Paradise MSA	975.1	8.4	975.1	898.4	14.8	1.3	1,054.4	773.5	75.9	-267.5	1,054.4	364.3
Reno - Sparks MSA	249.1	1.3	249.1	237.7	3.3	-0.1	250.5	212.4	14.5	-35.5	250.5	142.9
Carson City MSA	30.8	0.2	30.8	29.5	0.6	-0.4	31.0	27.4	1.4	-3.2	33.3	21.1

Nevada Employment

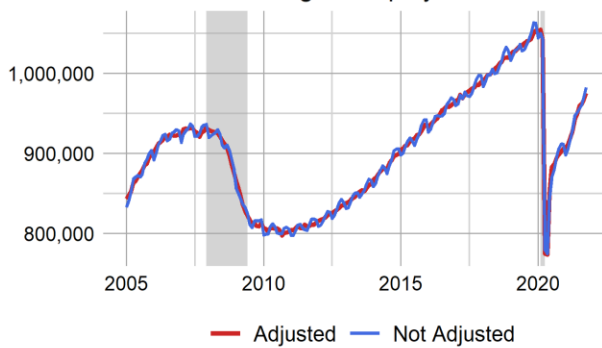
October 2021



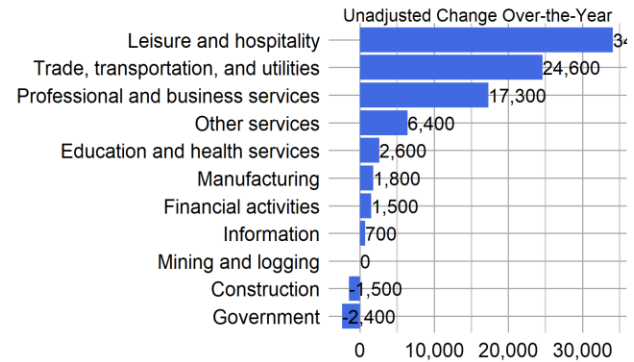
Nevada



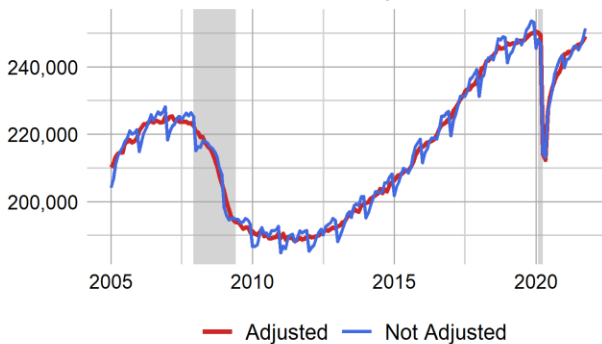
Las Vegas Employment



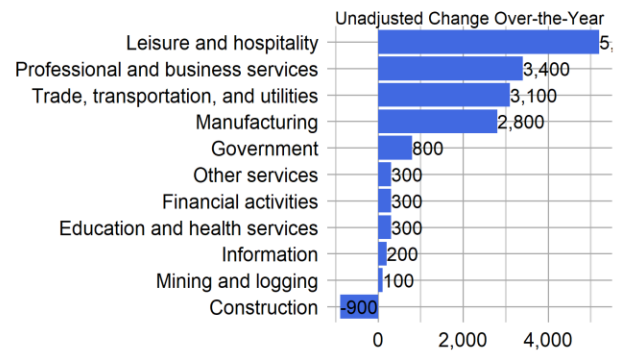
Las Vegas MSA



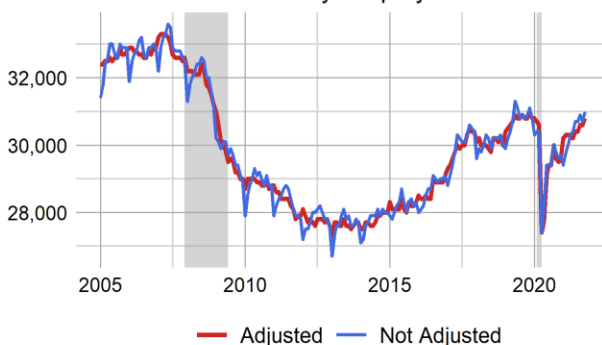
Reno Employment



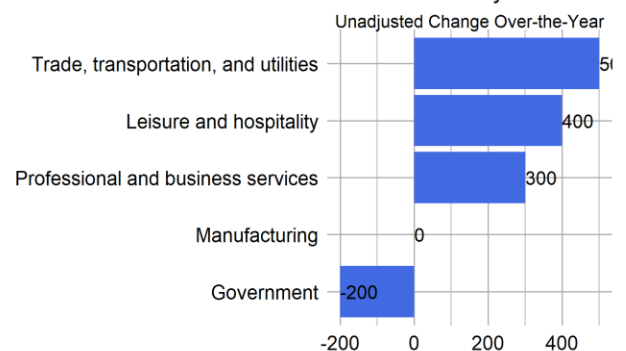
Reno MSA



Carson City Employment



Carson City MSA



Local Area Unemployment Statistics ([LAUS](#))

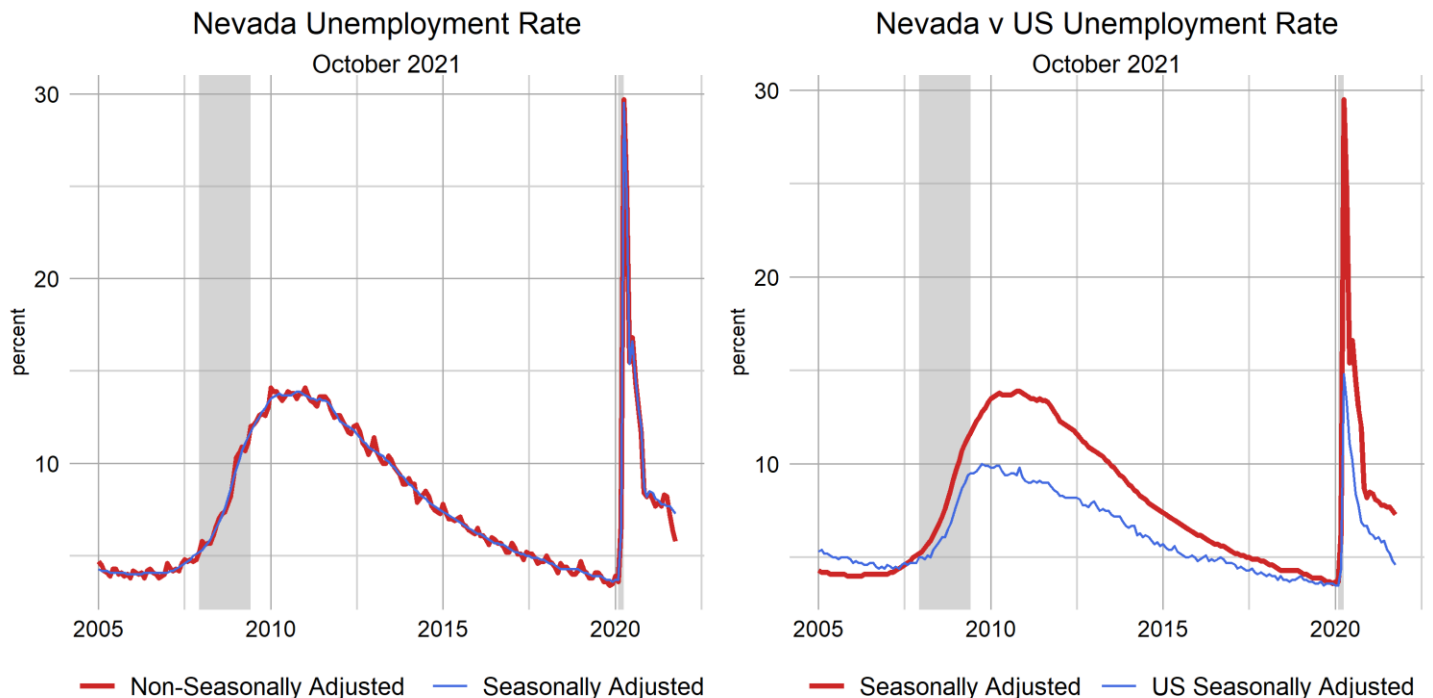
Figures for our unemployment estimates come from the Local Area Unemployment Statistics (LAUS) program sponsored by the ([BLS](#)). Nevada's unemployment rate was 7.3 percent in October, decreased by 0.2 from 7.5 percent in September, and decreased by 4.7 from 12 percent in 2020, seasonally adjusted. The number of unemployed individuals decreased by 4,505 from September for a current level of 112,764 people, which decreased by 72,586 unemployed people since 2020. The labor force in Nevada is currently 1,552,758 people, which decreased by 9,896 people from September, and increased by 7,014 people since 2020.

Visit our [LAUS page](#) for more information on the labor force in Nevada, or check out our [dashboard](#) for a look at each area.

U.S. & Nevada Local Area Unemployment Statistics October 2021

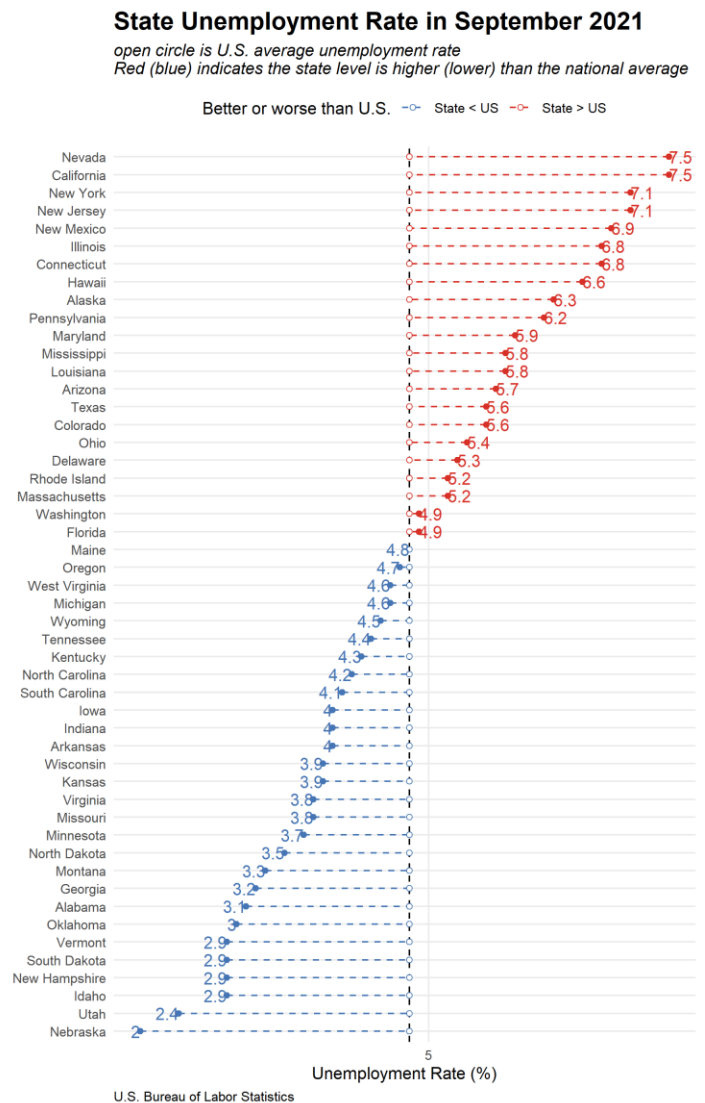
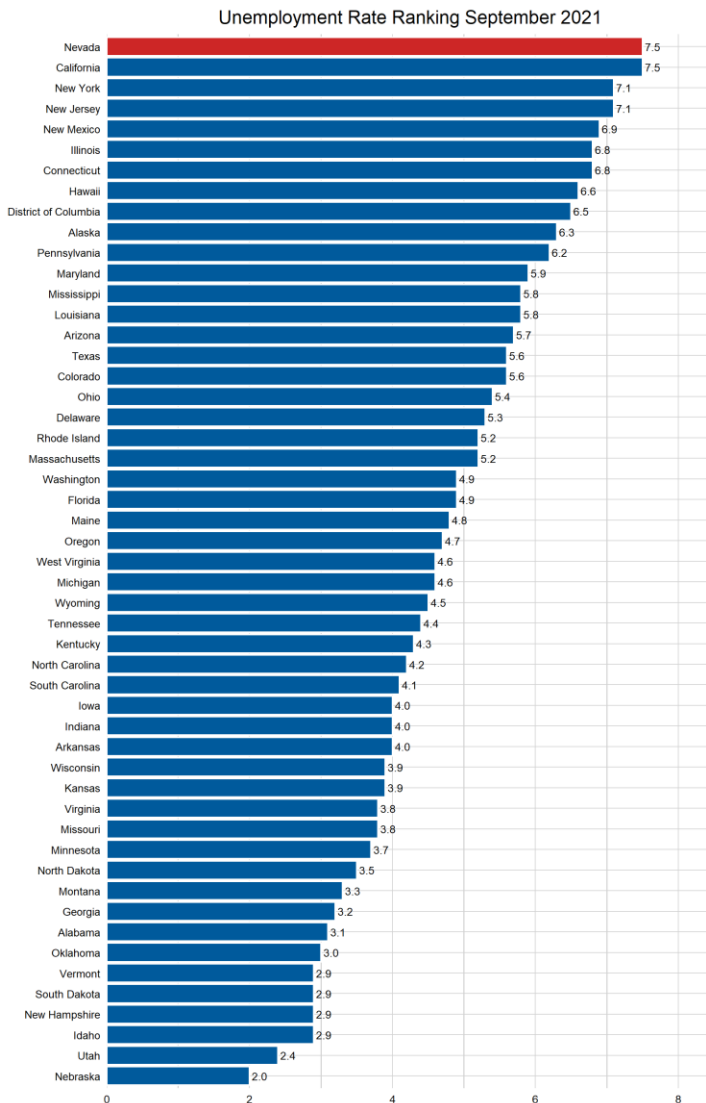
Area	Labor Force	Employed	Unemployed	Unemployment Rate	Labor Force Participation Rate	Employment Population Ratio
US						
U.S.	161,863,000	154,966,000	6,896,000	4.3	61.8	59.2
U.S. SA	161,458,000	154,039,000	7,419,000	4.6	61.6	58.8
State						
Nevada	1,548,488	1,459,426	89,062	5.8	61.0	57.4
Nevada SA	1,552,758	1,439,994	112,764	7.3	61.1	56.7

SA denotes seasonally adjusted data



Unemployment Rate State Rankings (Prior Month's Data)

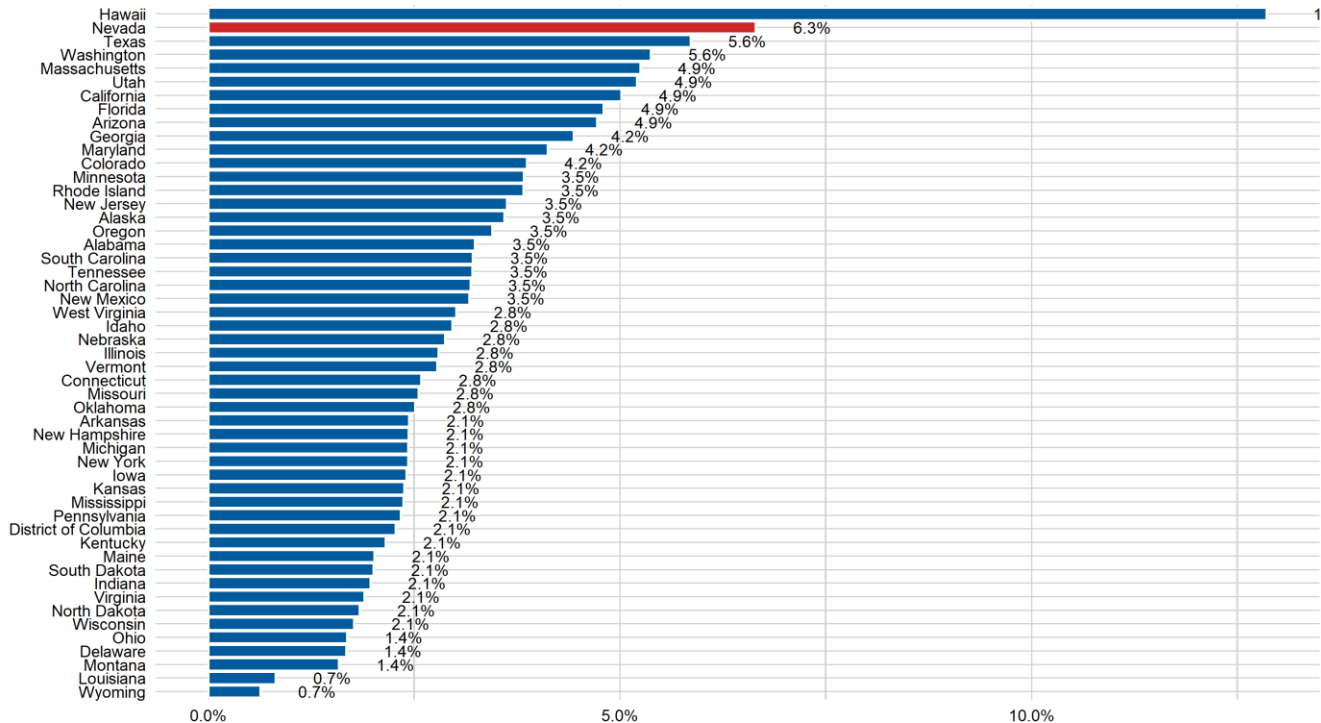
According to the Bureau of Labor Statistics, Nevada shared the highest unemployment rate with California in September at 7.5 percent, followed by New York and New Jersey at 7.1 percent. Nebraska had the lowest rate at 2.0 percent.



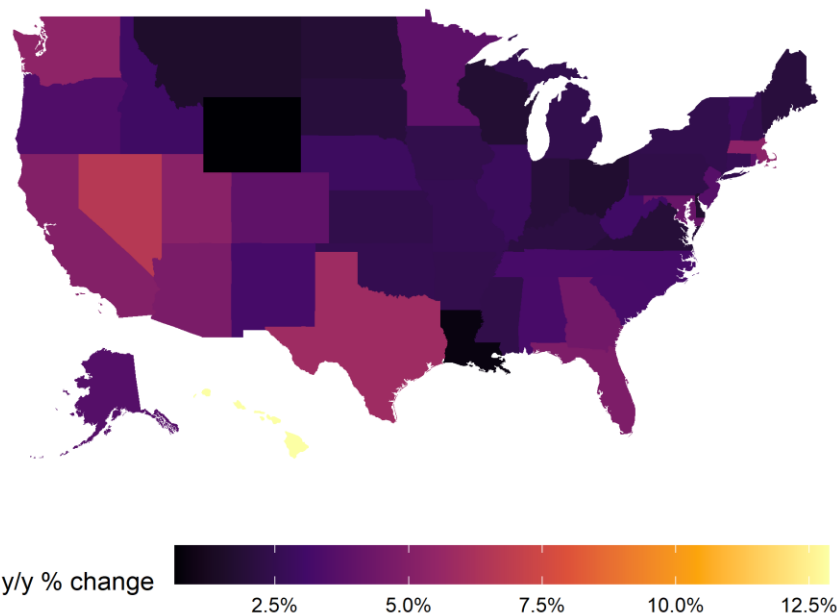
Employment State Rankings (Prior Month's Data)

According to the Bureau of Labor Statistics, Nevada experienced the second largest over-the-year percentage increase at 6.3 percent in non-farm payrolls in August 2021 behind Hawaii which grew the strongest at 12.9 percent. The smallest over-the-year employment increased was seen in Wyoming which grew by 0.7 percent.

Over the year Employment Growth Rank by State September 2021



Employment growth year-over-year
September

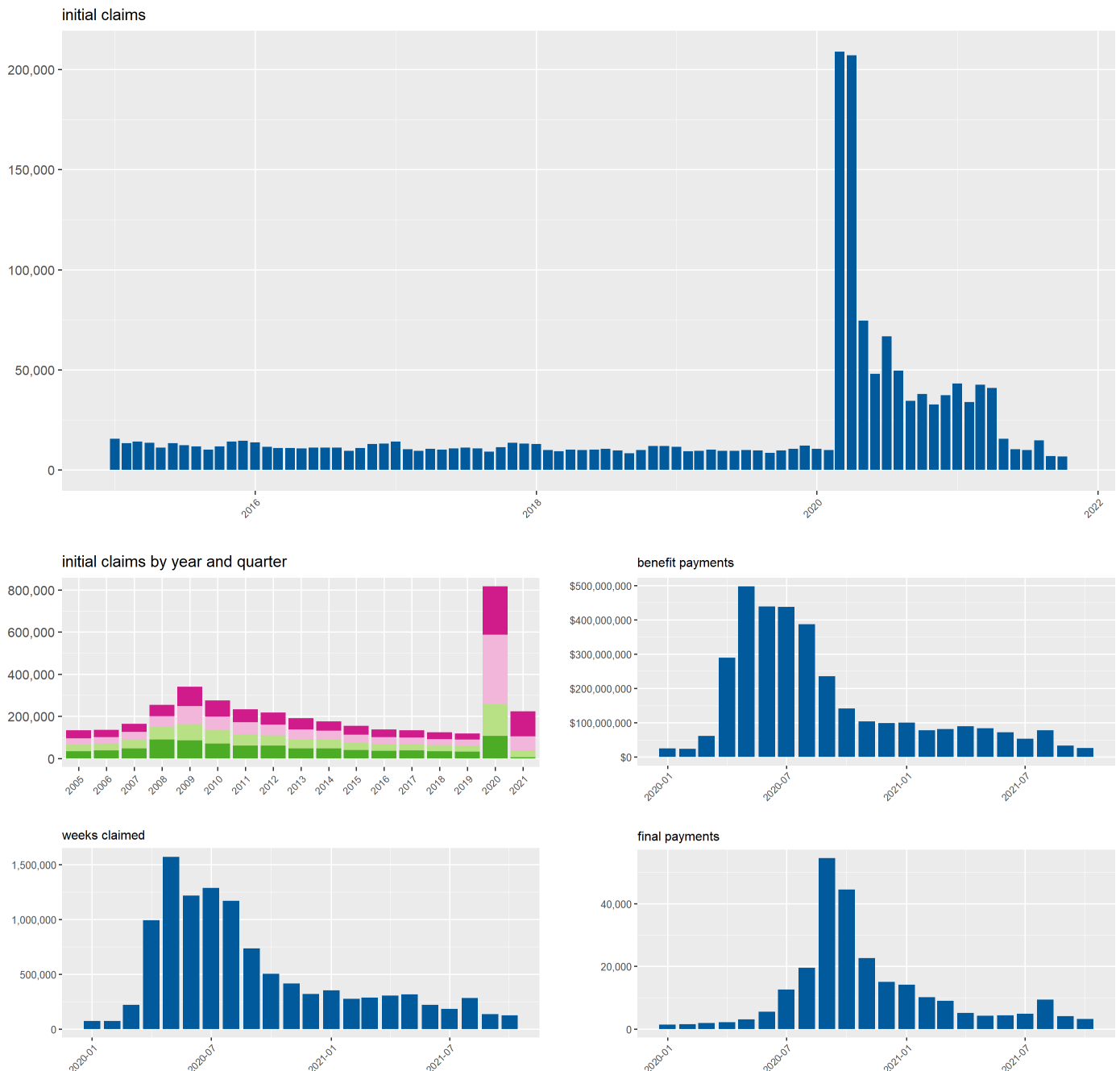


Source: U.S. Bureau of Labor Statistics (y/y)=Year-Over-Year

Unemployment Insurance

In October, 6,538 initial claims for unemployment insurance were filed in Nevada, a decrease of 314 claims, or 4.6 percent, from September when there were 6,852 claims. October's total follows a seasonal trend of declining initial claims in the spring and summer months. However, due to the considerable labor market impacts of the COVID-19 pandemic and the uncertainty that lies ahead, it is hard to be sure if our typical seasonal trends will hold true in the winter months. Currently, initial claim totals are below pre-pandemic lows. Additionally, initial claims are at levels not seen since 1990, the lowest they've been in over 30 years. Looking forward to the end of this year, initial claims are likely to remain below pre-pandemic levels as more individuals in the labor market find work. Definite reasons why Nevadan's who have left the labor force and have not returned after the COVID-19 recession continues to evolve with time and remain unknown.

State of Nevada Unemployment Insurance Activity



Claims activity for Nevada's regular program saw decreases across most measures in October, a reflection of the decline in initial claims seen over the last seven months. The number of regular program weeks claimed and compensated decreased from September, resulting in \$26.5 million in benefit payments, a decrease of 8.6 percent from the previous month. First payments were also down over the month, which is likely related to the initial claims decreases seen in the recent months. Final payments, also known as benefit exhaustions, decreased to 3,170, down 48.7 percent from September.

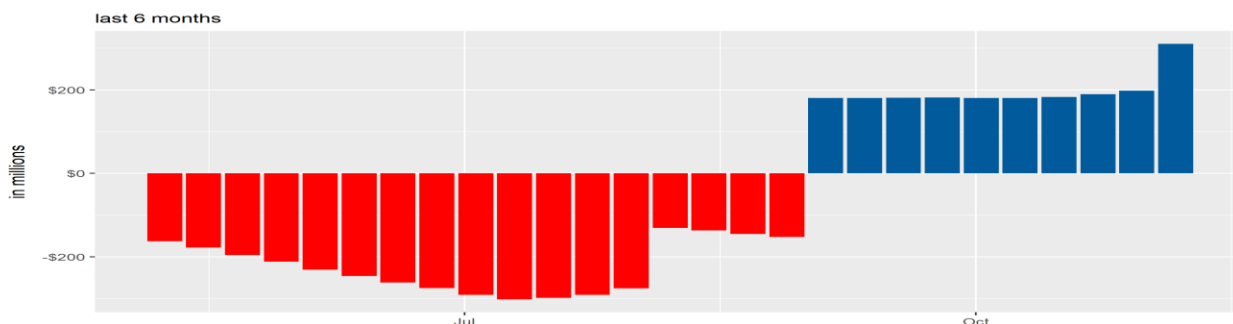
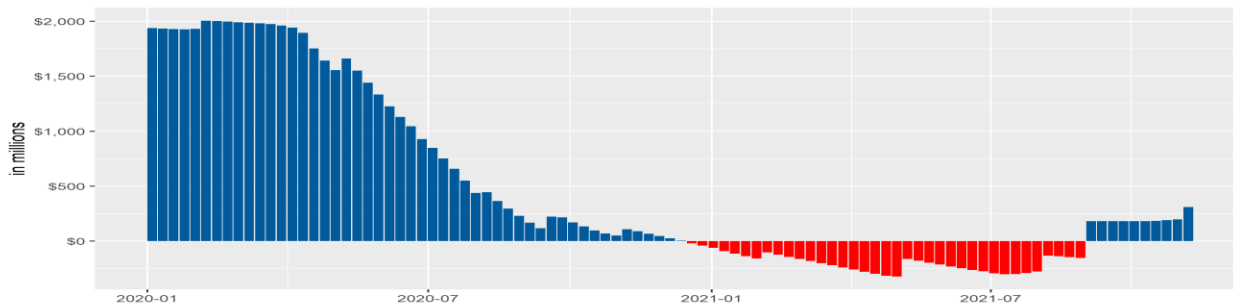
August 2021 Unemployment Insurance Activity

Measure	October 2021	October 2020	% change	September 2021	% change	12 month average
Initial Claims	6,538	37,891	-82.7%	6,852	-4.6%	23,907
Weeks Claimed	123,592	504,042	-75.5%	134,593	-8.2%	256,215
Weeks Compensated	80,644	423,383	-81.0%	103,875	-22.4%	206,929
Amount Compensated	\$26,450,625	\$141,691,107	-81.3%	\$32,798,884	-19.4%	\$72,232,824
Weeks Compensated Total Unemployment	68,925	277,251	-75.1%	96,898	-28.9%	166,678
Amount Compensated Total Unemployment	\$23,661,341	\$105,031,404	-77.5%	\$28,951,990	-18.3%	\$62,337,383
First Payments	3,039	13,068	-76.7%	6,181	-50.8%	11,120
Final Payments (Exhaustions)	3,170	44,458	-92.9%	4,069	-22.1%	8,498
Average Weekly Benefit	\$343.29	\$378.83	-9.4%	\$298.79	14.9%	\$374.97
Average Duration (in weeks)	14.99	14.95	0.3%	15.39	-2.6%	18.52
Exhaustion Rate	34.86%	53.38%	-34.7%	33.18%	5.1%	44.60%

Source: ETA 5159

With all federal loans paid and employer contribution payments coming in, the Trust Fund now has a \$300 million positive balance which represents nearly ten months' worth of benefit payments in reserve if the current monthly benefit payment amount is to remain steady. The current Trust Fund reserve is likely to last to May before the state receives the next large round of contributions from employers. No further borrowing, even on a temporary cash flow basis, will be needed if current claimant trends sustain or continue to decline. If current claim trends hold true, the Trust Fund will likely remain positive through the end of the next year and require no additional borrowing by the state.

UI Trust Fund Balance
week ending balance; net borrowing
since 2015



Nevada Unemployment Services Available

DETR serves all Nevada citizens by being the state's lead workforce development agency. DETR consists of divisions that offer workforce related services, job placement and training, services for people with disabilities, investigation of claims of discrimination, unemployment insurance benefits, and labor market data.

For current updates from the department and to find resources available, please visit:

<https://detr.nv.gov/coronavirus>

To file an unemployment insurance claim or for additional information, please visit <http://ui.nv.gov/>

To report unemployment fraud, please visit:

https://detr.nv.gov/Page/Unemployment_Fraud

Prepared by the Research and Analysis Bureau with contributions from: Christopher Robison, Dave Schmidt, Idalia Valdez-Parra, Jordan Ambrose, Jason Gortari, Dionny McDonnell, Marianne Segurson, and Tim Wilcox.

Special thanks to all the R and RStudio developers that built the packages to make this possible. Packages used in this report include tidyverse, DBI, tidyquant, data.table, scales, gt, kableExtra, ggthemes, cowplot, gridExtra, RcppRoll, viridis, fiftystater, ggforce, knitr, flexdashboard, lubridate, plotly, patchwork, reshape2.

This workforce product was funded by a grant awarded by the U.S. Department of Labor's Employment and Training Administration. The product was created by the recipient and does not necessarily reflect the official position of the U.S. Department of Labor. The U.S. Department of Labor makes no guarantees, warranties, or assurances of any kind, express or implied, with respect to such information, including any information on linked sites and including, but not limited to, accuracy of the information or its completeness, timeliness, usefulness, adequacy, continued availability, or ownership. This product is copyrighted by the institution that created it. Internal use by an organization and/or personal use by an individual for non-commercial purposes is permissible. All other uses require the prior authorization of the copyright owner.

CES Summary Tables

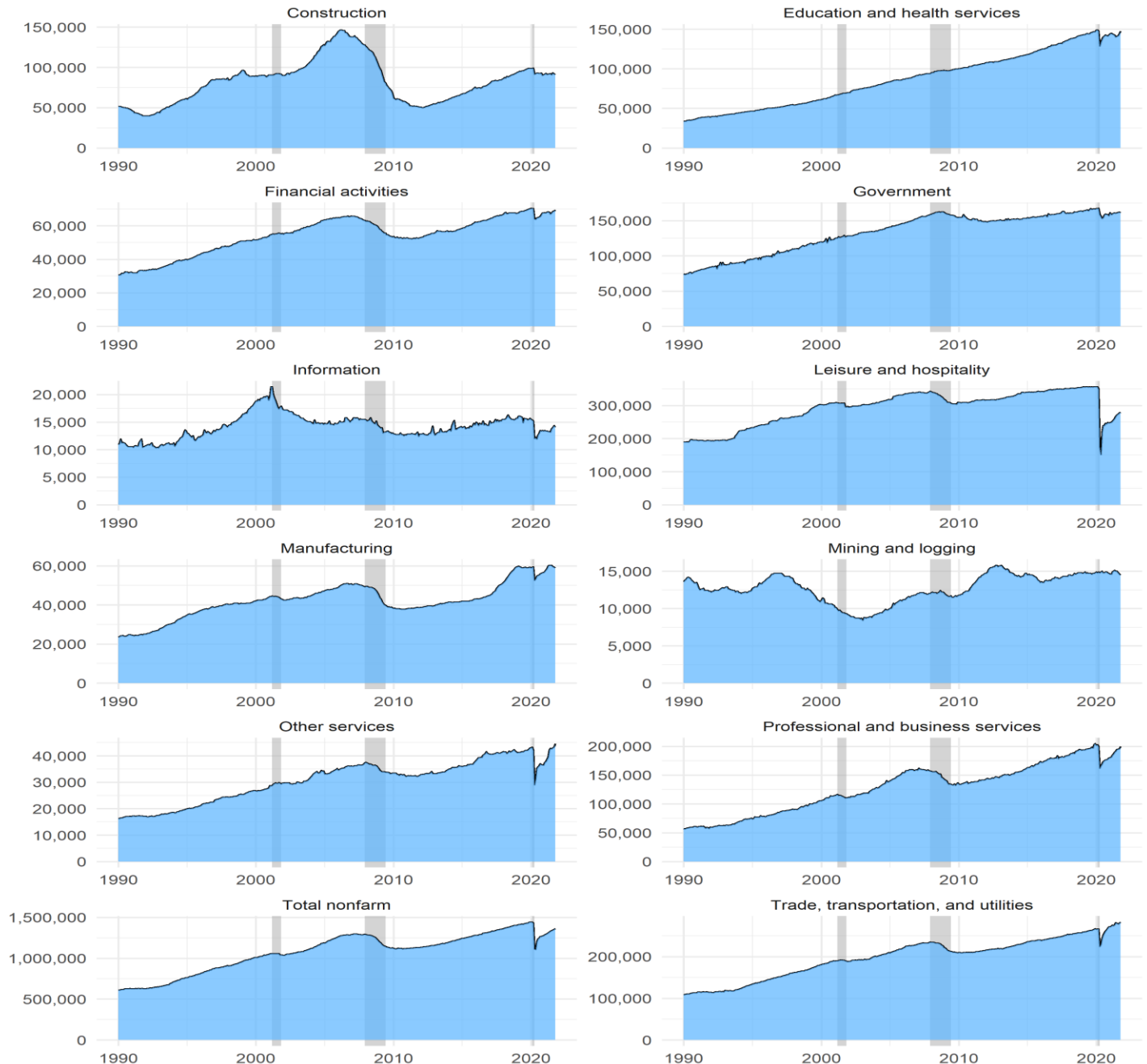
Seasonally adjusted estimates are used to show underlying economic trends by accounting for regularly seen seasonal patterns, and the result is smoother estimates. They are found by taking the difference of the unadjusted estimate and the expected seasonal movement.

Nevada Nonfarm Jobs Over the Month Change

September 2021 - October 2021

Area	Unadjusted Change	Expected Seasonal Movement	Seasonally Adjusted Change
Nevada	17,900	6,700	11,200

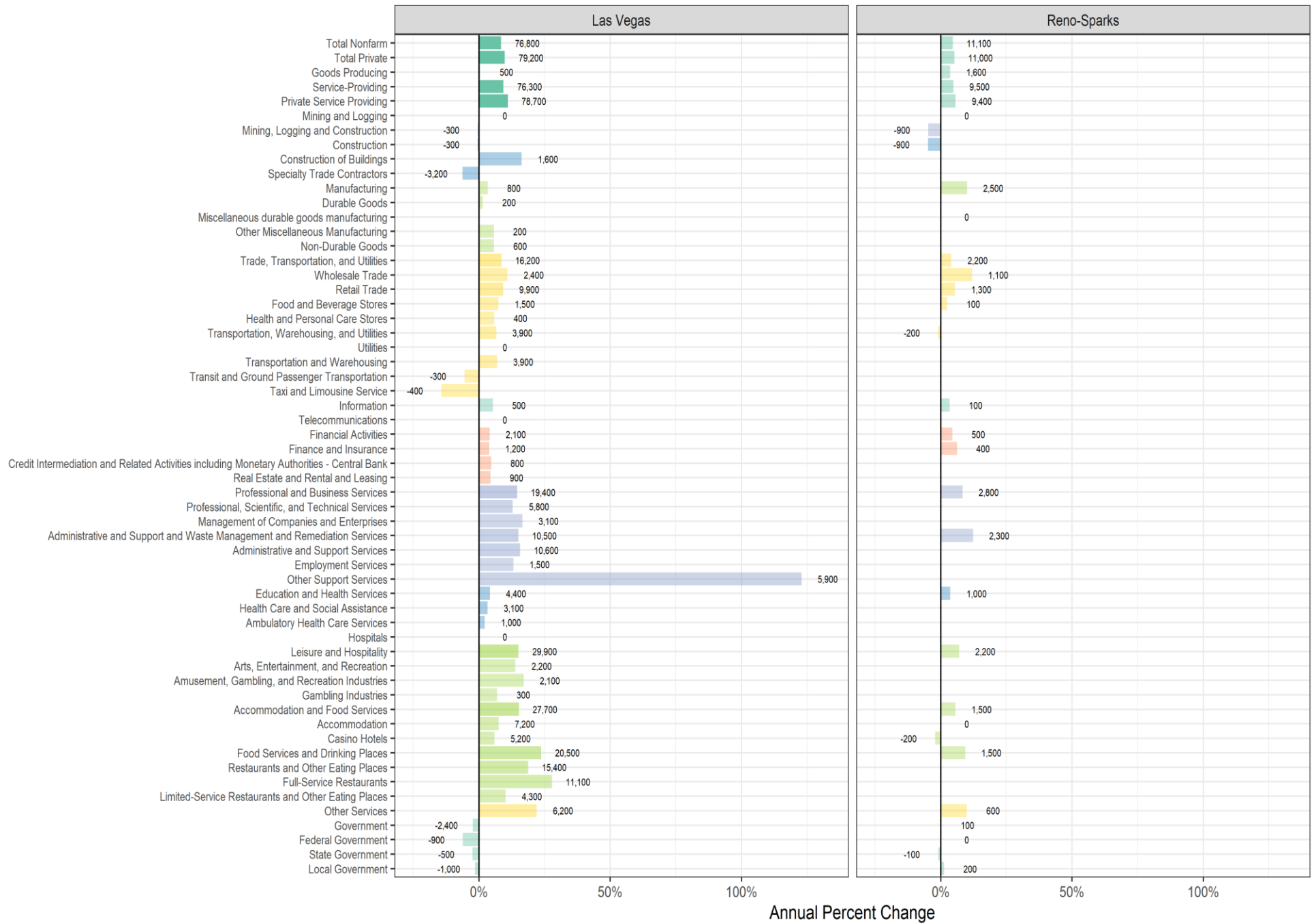
State of Nevada Industry Employment seasonally adjusted



Source: Bureau of Labor Statistics, Current Employment Statistics

Change in Employment, October 2020 to October 2021

Bars show percent change, labels show change in number of jobs



Nevada Labor Force Summary

Statewide (Estimates in Thousands)

	Oct-21	Oct-20	+/- change	% change	Sep-21
Non-Seasonally Adjusted					
LABOR FORCE	1,548.5	1,545.35	3.1	0.2%	1,532
EMPLOYMENT	1,459	1,366.0	93	6.8%	1,435
UNEMPLOYMENT	89	179.3	-90	-50.3%	98
UNEMPLOYMENT RATE	5.8%	11.6%	-5.9%	-50.4%	6.4%
Seasonally Adjusted					
LABOR FORCE	1,552.8	1,545.74	7.0	0.5%	1,563
EMPLOYMENT	1,440	1,360.4	80	5.9%	1,445
UNEMPLOYMENT	113	185.3	-73	-39.2%	117
UNEMPLOYMENT RATE	7.3%	12.0%	-4.7%	-39.4%	7.5%

UNEMPLOYMENT RATES BASED ON UNROUNDED DATA

Employment adjusted by census relationships to reflect number of persons by place of residence.

Information compiled by DETR's Research & Analysis Bureau

Nevada Labor Force Summary

Statewide Last 13 Months (Estimates in Thousands)

	Sep-20	Oct-20	Nov-20	Dec-20	Jan-21	Feb-21	Mar-21	Apr-21	May-21	Jun-21	Jul-21	Aug-21	Sep-21	Oct-21	12m Avg.
Non-Seasonally Adjusted															
LABOR FORCE	1,539.1	1,545.3	1,513.5	1,513.9	1,529.4	1,552.1	1,549.0	1,553.2	1,563.8	1,560.2	1,547.7	1,533.2	1,532.3	1,548.5	1,541.4
EMPLOYMENT	1,338.4	1,366.0	1,387.1	1,390.5	1,400.7	1,427.8	1,430.4	1,430.5	1,443.2	1,430.6	1,420.8	1,423.3	1,434.7	1,459.4	1,423.2
UNEMPLOYMENT	200.7	179.3	126.4	123.5	128.7	124.3	118.6	122.7	120.7	129.6	126.8	109.9	97.6	89.1	118.2
UNEMPLOYMENT RATE	13.0%	11.6%	8.4%	8.2%	8.4%	8.0%	7.7%	7.9%	7.7%	8.3%	8.2%	7.2%	6.4%	5.8%	7.7%
Seasonally Adjusted															
LABOR FORCE	1,535.2	1,545.7	1,509.1	1,516.4	1,536.0	1,547.3	1,552.4	1,559.9	1,564.6	1,569.2	1,577.6	1,571.4	1,562.7	1,552.8	1,551.6
EMPLOYMENT	1,335.4	1,360.4	1,378.0	1,391.8	1,405.5	1,416.7	1,426.4	1,434.8	1,442.0	1,447.0	1,456.0	1,450.9	1,445.4	1,440.0	1,427.9
UNEMPLOYMENT	199.7	185.3	131.1	124.6	130.6	130.6	125.9	125.1	122.6	122.1	121.6	120.5	117.3	112.8	123.7
UNEMPLOYMENT RATE	13.0%	12.0%	8.7%	8.2%	8.5%	8.4%	8.1%	8.0%	7.8%	7.8%	7.7%	7.7%	7.5%	7.3%	8.0%

Note: Unemployment rates are based on unrounded data.

Employment adjusted by census relationships to reflect number of persons by place of residence.

Information compiled by DETR's Research & Analysis Bureau

Seasonally Adjusted Establishment Based Industrial Employment

Statewide (Estimates in Thousands)

	Oct-21	Oct-20	+/- change	% change	Sep-21
Total nonfarm	1,363.9	1,267.2	96.7	7.6%	1,352.7
Mining and logging	14.5	14.9	-0.4	-2.7%	14.6
Construction	91.1	93.0	-1.9	-2.0%	91.7
Manufacturing	58.9	56.1	2.8	5.0%	59.3
Durable goods	39.4	37.5	1.9	5.1%	39.9
Nondurable goods	19.5	18.6	0.9	4.8%	19.4
Trade, transportation, and utilities	283.0	264.5	18.5	7.0%	280.6
Wholesale Trade	38.9	35.4	3.5	9.9%	38.4
Retail trade	156.6	145.1	11.5	7.9%	154.9
Transportation, Warehousing, and Utilities	87.5	84.0	3.5	4.2%	87.3
Information	14.1	13.4	0.7	5.2%	14.4
Financial activities	69.5	66.6	2.9	4.4%	68.9
Finance and insurance	41.9	40.1	1.8	4.5%	41.4
Real estate and rental and leasing	27.6	26.5	1.1	4.2%	27.5
Professional and business services	199.9	176.6	23.3	13.2%	195.7
Professional and technical services	65.9	60.5	5.4	8.9%	65.6
Management of companies and enterprises	26.1	23.2	2.9	12.5%	25.9
Administrative and waste services	107.9	92.9	15.0	16.1%	104.2
Education and health services	147.5	141.9	5.6	3.9%	144.4
Educational services	11.7	11.6	0.1	0.9%	11.6
Health care and social assistance	135.8	130.3	5.5	4.2%	132.8
Leisure and hospitality	279.7	244.8	34.9	14.3%	277.8
Arts, entertainment, and recreation	28.1	24.0	4.1	17.1%	27.5
Other services	44.6	36.7	7.9	21.5%	43.4
Government	161.1	158.7	2.4	1.5%	161.9
Federal	20.2	21.3	-1.1	-5.2%	20.5
State government	40.5	39.5	1.0	2.5%	40.7
Local government	100.4	97.9	2.5	2.6%	100.7

UNEMPLOYMENT RATES BASED ON UNROUNDED DATA

Employment adjusted by census relationships to reflect number of persons by place of residence.

Information compiled by DETR's Research & Analysis Bureau

Seasonally Adjusted Establishment Based Industrial Employment

Statewide Last 13 Months (Estimates in Thousands)

	Sep-20	Oct-20	Nov-20	Dec-20	Jan-21	Feb-21	Mar-21	Apr-21	May-21	Jun-21	Jul-21	Aug-21	Sep-21	Oct-21	12m Avg.
Total nonfarm	1,265.2	1,267.2	1,273.4	1,277.5	1,286.9	1,291.5	1,300.2	1,308.2	1,320.6	1,331.1	1,338.5	1,344.9	1,352.7	1,363.9	1,315.8
Mining and logging	14.9	14.9	14.8	14.7	14.6	14.6	14.9	15.0	15.1	15.0	15.0	14.8	14.6	14.5	14.8
Construction	92.4	93.0	90.0	90.7	91.5	92.4	91.1	91.4	91.9	92.0	90.8	93.1	91.7	91.1	91.5
Manufacturing	55.8	56.1	56.4	56.5	57.0	57.8	58.5	60.0	60.3	60.2	60.2	59.7	59.3	58.9	58.7
Durable goods	37.3	37.5	37.6	37.6	38.4	39.0	39.9	40.8	41.1	41.0	40.9	40.4	39.9	39.4	39.7
Nondurable goods	18.5	18.6	18.8	18.9	18.6	18.8	18.6	19.2	19.2	19.2	19.3	19.3	19.4	19.5	19.1
Trade, transportation, and utilities	261.5	264.5	268.4	271.2	271.4	273.6	275.7	274.3	276.1	281.3	280.4	278.4	280.6	283.0	276.2
Wholesale Trade	35.8	35.4	36.9	36.8	36.1	36.0	36.4	37.6	37.5	38.2	37.9	38.3	38.4	38.9	37.4
Retail trade	143.5	145.1	146.9	147.3	149.3	152.1	152.4	149.6	150.3	154.7	153.7	152.3	154.9	156.6	151.7
Transportation, Warehousing, and Utilities	82.2	84.0	84.6	87.1	86.0	85.5	86.9	87.1	88.3	88.4	88.8	87.8	87.3	87.5	87.1
Information	13.5	13.4	13.5	13.4	13.5	13.4	13.4	13.3	13.3	13.2	13.8	14.0	14.4	14.1	13.6
Financial activities	65.5	66.6	67.6	67.6	67.9	67.7	68.2	68.3	68.2	67.0	67.6	68.5	68.9	69.5	68.1
Finance and insurance	39.6	40.1	40.8	40.5	40.5	40.9	41.2	41.3	41.1	40.3	40.4	41.0	41.4	41.9	40.9
Real estate and rental and leasing	25.9	26.5	26.8	27.1	27.4	26.8	27.0	27.0	27.1	26.7	27.2	27.5	27.5	27.6	27.1
Professional and business services	176.4	176.6	178.0	179.7	180.3	181.6	184.3	186.4	189.6	191.2	194.5	195.2	195.7	199.9	188.0
Professional and technical services	60.4	60.5	59.8	60.8	61.6	61.5	61.9	62.0	62.9	64.7	64.9	66.4	65.6	65.9	63.2
Management of companies and enterprises	23.3	23.2	23.5	23.7	23.8	24.3	24.5	25.1	25.1	25.4	25.3	25.3	25.9	26.1	24.8
Administrative and waste services	92.7	92.9	94.7	95.2	94.9	95.8	97.9	99.3	101.6	101.1	104.3	103.5	104.2	107.9	100.0
Education and health services	142.7	141.9	141.2	142.9	144.3	144.8	144.1	143.5	142.7	140.5	141.1	142.2	144.4	147.5	143.3
Educational services	11.6	11.6	11.4	11.2	11.3	11.8	11.1	11.4	11.6	11.5	11.6	11.7	11.6	11.7	11.5
Health care and social assistance	131.1	130.3	129.8	131.7	133.0	133.0	133.0	132.1	131.1	129.0	129.5	130.5	132.8	135.8	131.8
Leisure and hospitality	246.3	244.8	248.5	247.3	247.7	249.2	252.0	256.1	260.4	267.3	271.5	274.5	277.8	279.7	261.0
Arts, entertainment, and recreation	24.7	24.0	24.9	25.0	24.9	25.1	25.2	26.1	26.5	26.3	26.5	26.7	27.5	28.1	26.1
Accommodation and food services	221.6	220.8	223.6	222.3	222.8	224.1	226.8	230.0	233.9	241.0	245.0	247.8	250.3	251.6	234.9
Other services	37.0	36.7	36.6	36.5	37.5	37.8	38.7	39.5	42.1	42.8	42.6	42.9	43.4	44.6	40.4
Government	159.2	158.7	158.4	157.0	161.2	158.6	159.3	160.4	160.9	160.6	161.0	161.6	161.9	161.1	160.2
Federal	22.2	21.3	20.5	20.6	19.9	20.5	20.7	20.7	20.7	20.5	20.7	20.6	20.5	20.2	20.5
State government	40.4	39.5	39.7	39.4	43.7	40.3	40.5	40.9	41.0	40.8	40.5	40.6	40.7	40.5	40.7
Local government	96.6	97.9	98.2	97.0	97.6	97.8	98.1	98.8	99.2	99.3	99.8	100.4	100.7	100.4	98.9

UNEMPLOYMENT RATES BASED ON UNROUNDED DATA

Employment adjusted by census relationships to reflect number of persons by place of residence.

Information compiled by DETR's Research & Analysis Bureau

Non-Seasonally Adjusted Establishment Based Industrial Employment

Statewide (Estimates in Thousands)

	Oct-21	Oct-20	+/- change	% change	Sep-21
Total nonfarm	1,376.2	1,280.1	96.1	7.51%	1,358.3
Goods-producing	166.6	165.6	1.0	0.60%	167.2
Mining and logging	14.7	15.1	-0.4	-2.65%	14.8
Metal ore mining	11.0	11.2	-0.2	-1.79%	11.0
Construction	92.8	94.3	-1.5	-1.59%	93.0
Construction of buildings	16.9	15.5	1.4	9.03%	16.9
Specialty trade contractors	66.4	69.4	-3.0	-4.32%	66.6
Manufacturing	59.1	56.2	2.9	5.16%	59.4
Durable goods	39.5	37.7	1.8	4.77%	40.0
Nondurable goods	19.6	18.5	1.1	5.95%	19.4
Service-providing	1,209.6	1,114.5	95.1	8.53%	1,191.1
Private service-providing	1,045.6	952.4	93.2	9.79%	1,026.5
Trade, transportation, and utilities	284.9	266.2	18.7	7.02%	278.5
Wholesale Trade	39.1	35.3	3.8	10.76%	38.8
Retail trade	158.0	146.0	12.0	8.22%	154.1
Food and beverage stores	28.3	26.9	1.4	5.20%	28.3
Health and personal care stores	8.7	8.2	0.5	6.10%	8.4
Transportation, Warehousing, and Utilities	87.8	84.9	2.9	3.42%	85.6
Utilities	4.0	4.1	-0.1	-2.44%	4.0
Transportation and Warehousing	83.8	80.8	3.0	3.71%	81.6
Transit and ground passenger transportation	6.0	6.2	-0.2	-3.23%	5.8
Taxi and limousine service	2.5	2.9	-0.4	-13.79%	2.5
Information	14.1	13.5	0.6	4.44%	14.2
Telecommunications	4.0	3.9	0.1	2.56%	4.0
Financial activities	69.5	66.7	2.8	4.20%	68.5
Finance and insurance	41.8	40.0	1.8	4.50%	41.1
Credit intermediation and related activities	22.0	21.0	1.0	4.76%	21.9
Real estate and rental and leasing	27.7	26.7	1.0	3.75%	27.4
Professional and business services	203.8	180.3	23.5	13.03%	196.8
Professional and technical services	66.7	61.8	4.9	7.93%	65.0
Management of companies and enterprises	26.3	23.5	2.8	11.91%	26.0
Administrative and waste services	110.8	95.0	15.8	16.63%	105.8
Administrative and support services	106.8	91.1	15.7	17.23%	101.8
Employment services	23.9	21.1	2.8	13.27%	22.7
Education and health services	147.7	142.3	5.4	3.79%	143.8
Educational services	11.9	11.7	0.2	1.71%	11.5
Health care and social assistance	135.8	130.6	5.2	3.98%	132.3
Ambulatory health care services	62.4	59.4	3.0	5.05%	60.5
Hospitals	33.1	33.6	-0.5	-1.49%	32.9
Leisure and hospitality	280.4	246.1	34.3	13.94%	280.5
Arts, entertainment, and recreation	28.0	23.9	4.1	17.15%	28.0
Amusements, gambling, and recreation	23.4	19.9	3.5	17.59%	23.4
Accommodation and food services	252.4	222.2	30.2	13.59%	252.5
Accommodation	119.2	113.1	6.1	5.39%	120.3
Casino hotels	107.8	102.8	5.0	4.86%	108.8
Gambling industries	8.8	8.2	0.6	7.32%	8.7
Food services and drinking places	133.2	109.1	24.1	22.09%	132.2
Full-service restaurants	61.3	49.5	11.8	23.84%	61.1
Limited-service eating places	59.7	53.9	5.8	10.76%	60.0
Other services	45.2	37.3	7.9	21.18%	44.2
Government	164.0	162.1	1.9	1.17%	164.6
Federal	20.3	21.3	-1.0	-4.69%	20.6
State government	42.5	42.0	0.5	1.19%	42.8
State government education	24.0	22.8	1.2	5.26%	24.3
State government, excluding education	18.5	19.2	-0.7	-3.65%	18.5
Local government	101.2	98.8	2.4	2.43%	101.2
Local government education	54.5	53.2	1.3	2.44%	54.6
Local government, excluding education	46.7	45.6	1.1	2.41%	46.6

UNEMPLOYMENT RATES BASED ON UNROUNDED DATA
Employment adjusted by census relationships to reflect number of persons by place of residence.
Information compiled by DETR's Research & Analysis Bureau

Non-Seasonally Adjusted Establishment Based Industrial Employment

Statewide Last 13 Months (Estimates in Thousands)

	Sep-20	Oct-20	Nov-20	Dec-20	Jan-21	Feb-21	Mar-21	Apr-21	May-21	Jun-21	Jul-21	Aug-21	Sep-21	Oct-21	12m Avg.
Total nonfarm	1,268.5	1,280.1	1,286.8	1,287.3	1,270.2	1,281.7	1,293.7	1,309.8	1,328.5	1,334.4	1,334.6	1,343.7	1,358.3	1,376.2	1,317.1
Goods-producing	164.1	165.6	161.1	161.4	159.0	161.4	163.0	165.6	168.3	169.8	167.6	169.7	167.2	166.6	165.1
Mining and logging	15.0	15.1	15.0	14.7	14.4	14.3	14.7	14.8	15.0	15.2	15.4	15.1	14.8	14.7	14.8
Metal ore mining	11.2	11.2	11.2	11.0	10.9	10.8	11.1	11.2	11.2	11.3	11.5	11.3	11.0	11.0	11.1
Construction	93.4	94.3	89.5	90.0	88.0	89.6	90.3	90.9	93.1	93.9	91.4	94.6	93.0	92.8	91.4
Construction of buildings	16.1	15.5	15.0	14.9	14.5	15.0	15.2	15.1	15.4	15.5	15.8	16.9	16.9	16.9	15.6
Specialty trade contractors	68.3	69.4	65.3	65.7	64.3	65.6	66.1	66.7	68.5	69.3	66.3	68.4	66.6	66.4	66.6
Manufacturing	55.7	56.2	56.6	56.7	56.6	57.5	58.0	59.9	60.2	60.7	60.8	60.0	59.4	59.1	58.8
Durable goods	37.3	37.7	37.7	37.7	38.0	38.8	39.5	40.7	40.9	41.6	41.5	40.7	40.0	39.5	39.7
Nondurable goods	18.4	18.5	18.9	19.0	18.6	18.7	18.5	19.2	19.3	19.1	19.3	19.3	19.4	19.6	19.1
Service-providing	1,104.4	1,114.5	1,125.7	1,125.9	1,111.2	1,120.3	1,130.7	1,144.2	1,160.2	1,164.6	1,167.0	1,174.0	1,191.1	1,209.6	1,152.0
Private service-providing	941.9	952.4	963.2	964.8	952.2	958.7	968.2	981.1	996.7	1,008.4	1,015.4	1,020.5	1,026.5	1,045.6	991.8
Trade, transportation, and utilities	260.5	266.2	277.4	281.4	270.9	270.7	272.7	271.5	274.6	279.2	277.3	275.6	278.5	284.9	276.2
Wholesale Trade	35.8	35.3	37.1	37.0	35.9	35.9	36.0	37.4	37.4	38.3	38.0	38.5	38.8	39.1	37.4
Retail trade	142.5	146.0	152.7	153.2	148.6	150.0	150.3	147.9	148.9	153.2	152.3	151.3	154.1	158.0	151.7
Food and beverage stores	26.9	26.9	27.4	27.2	27.1	27.5	27.5	27.3	27.5	28.1	28.2	27.9	28.3	28.3	27.7
Health and personal care stores	8.2	8.2	8.3	8.4	8.3	8.3	8.3	8.4	8.4	8.3	8.3	8.3	8.4	8.7	8.4
Transportation, Warehousing, and Utilities	82.2	84.9	87.6	91.2	86.4	84.8	86.4	86.2	88.3	87.7	87.0	85.8	85.6	87.8	87.1
Utilities	4.1	4.1	4.0	4.0	4.0	4.0	4.0	4.0	4.0	4.0	4.0	4.0	4.0	4.0	4.0
Transportation and Warehousing	78.1	80.8	83.6	87.2	82.4	80.8	82.4	82.2	84.3	83.7	83.0	81.8	81.6	83.8	83.1
Transit and ground passenger transportation	6.2	6.2	6.2	6.1	6.0	6.1	6.2	6.1	6.2	6.1	5.9	5.9	5.8	6.0	6.0
Taxi and limousine service	2.9	2.9	2.9	2.8	2.7	2.8	2.8	2.7	2.9	2.8	2.6	2.6	2.5	2.5	2.7
Information	13.3	13.5	13.7	13.4	13.3	13.3	13.2	13.4	13.5	13.5	13.7	13.9	14.2	14.1	13.6
Telecommunications	3.9	3.9	3.9	3.9	3.9	3.9	3.9	3.9	3.9	4.0	3.9	4.0	4.0	4.0	3.9
Financial activities	65.5	66.7	67.6	68.2	67.8	67.8	68.1	68.1	68.2	67.1	67.0	68.9	68.5	69.5	68.1
Finance and insurance	39.5	40.0	40.9	41.0	40.8	41.2	41.4	41.2	40.8	40.2	40.0	41.0	41.1	41.8	41.0
Credit intermediation and related activities	20.8	21.0	21.5	22.0	21.8	21.8	21.8	21.9	21.7	21.4	21.3	21.9	21.9	22.0	21.8
Real estate and rental and leasing	26.0	26.7	26.7	27.2	27.0	26.6	26.7	26.9	27.4	26.9	27.0	27.9	27.4	27.7	27.1
Professional and business services	175.9	180.3	180.5	179.9	178.8	180.0	182.4	186.4	189.1	189.9	194.5	196.6	196.8	203.8	188.2
Professional and technical services	60.1	61.8	59.5	61.1	61.4	61.9	62.0	62.9	62.7	64.2	64.9	66.4	65.0	66.7	63.2
Management of companies and enterprises	23.3	23.5	23.7	23.9	23.5	24.0	24.3	25.0	25.0	25.5	25.4	26.0	26.0	26.3	24.8
Administrative and waste services	92.5	95.0	97.3	94.9	93.9	94.1	96.1	98.5	101.4	100.2	104.2	104.8	105.8	110.8	100.2
Administrative and support services	88.5	91.1	93.4	91.0	90.3	90.5	92.2	94.6	97.5	96.3	100.2	100.8	101.8	106.8	96.3
Employment services	20.5	21.1	23.5	23.2	21.4	21.0	21.2	21.7	22.1	21.8	21.9	22.4	22.7	23.9	22.2
Education and health services	142.2	142.3	140.9	143.6	143.9	145.2	143.3	143.0	143.0	141.0	140.6	142.0	143.8	147.7	143.2
Educational services	11.6	11.7	11.6	11.4	11.4	12.0	11.4	11.7	11.7	11.4	11.1	11.3	11.5	11.9	11.5
Health care and social assistance	130.6	130.6	129.3	132.2	132.5	133.2	131.9	131.3	131.3	129.6	129.5	130.7	132.3	135.8	131.6
Ambulatory health care services	59.4	59.4	58.0	59.3	60.5	61.2	60.6	60.1	60.4	59.5	59.0	60.0	60.5	62.4	60.1
Hospitals	33.3	33.6	33.7	33.7	33.3	33.4	33.0	32.9	33.0	32.9	32.9	32.9	32.9	33.1	33.1
Leisure and hospitality	247.4	246.1	246.2	242.6	240.8	244.5	250.3	258.8	265.9	274.1	279.1	280.0	280.5	280.4	261.9
Arts, entertainment, and recreation	24.9	23.9	24.0	24.1	23.7	23.9	24.8	26.4	27.8	27.7	28.0	27.9	28.0	28.0	26.2
Amusements, gambling, and recreation	21.0	19.9	19.9	20.5	20.2	20.3	20.8	22.0	23.5	23.4	23.9	23.7	23.4	23.4	22.1
Accommodation and food services	222.5	222.2	222.2	218.5	217.1	220.6	225.5	232.4	238.1	246.4	251.1	252.1	252.5	252.4	235.7
Accommodation	115.6	113.1	112.3	110.0	108.0	108.6	109.6	111.8	113.4	117.5	119.3	119.7	120.3	119.2	114.1
Casino hotels	105.4	102.8	102.1	100.2	98.5	98.8	99.5	102.0	103.2	107.0	107.9	108.1	108.8	107.8	103.7
Gambling industries	8.7	8.2	8.3	8.6	8.1	8.1	8.2	8.5	8.7	8.6	8.8	8.6	8.7	8.8	8.5
Food services and drinking places	106.9	109.1	109.9	108.5	109.1	112.0	115.9	120.6	124.7	128.9	131.8	132.4	132.2	133.2	121.6
Full-service restaurants	47.2	49.5	49.5	48.0	48.2	50.1	51.5	54.7	56.2	59.1	59.4	59.3	61.1	61.3	54.9
Limited-service eating places	54.0	53.9	54.1	53.4	53.7	54.3	55.5	54.8	57.6	58.7	60.6	61.2	60.0	59.7	57.0
Other services	37.1	37.3	36.9	35.7	36.7	37.2	38.2	39.9	42.4	43.6	43.2	43.5	44.2	45.2	40.6
Government	162.5	162.1	162.5	161.1	159.0	161.6	162.5	163.1	163.5	156.2	151.6	153.5	164.6	164.0	160.3
Federal	22.4	21.3	20.7	20.8	19.8	20.2	20.2	20.5	20.7	20.7	20.9	20.7	20.6	20.3	20.5
State government	41.9	42.0	42.1	41.6	41.0	42.3	42.6	42.5	42.1	37.7	36.3	36.2	42.8	42.5	40.8
State government education	22.6	22.8	22.9	22.4	21.8	23.0	23.3	23.3	23.0	18.8	17.6	17.6	24.3	24.0	21.8
State government, excluding education	19.3	19.2	19.2	19.2	19.2	19.3	19.3	19.2	19.1	18.9	18.7	18.6	18.5	18.5	19.0
Local government	98.2	98.8	99.7	98.7	98.2	99.1	99.7	100.1	100.7	97.8	94.4	96.6	101.2	101.2	99.0
Local government education	52.8	53.2	53.4	53.4	53.0	53.7	54.0	53.8	54.2	50.8	47.3	49.6	54.6	54.5	52.7
Local government, excluding education	45.4	45.6	46.3	45.3	45.2	45.4	45.7	46.3	46.5	47.0	47.1	47.0	46.6	46.7	46.3

UNEMPLOYMENT RATES BASED ON UNROUNDED DATA

Employment adjusted by census relationships to reflect number of persons by place of residence.

Information compiled by DETR's Research & Analysis Bureau

Non-Seasonally Adjusted Establishment Based Industrial Employment

Las Vegas MSA (Estimates in Thousands)

	Oct-21	Oct-20	+/- change	% change	Sep-21
Total nonfarm	982.5	905.7	76.8	8.48%	969.8
Goods-producing	90.9	90.4	0.5	0.55%	91.5
Mining and logging	0.4	0.4	0.0	0.00%	0.4
Construction	66.2	66.5	-0.3	-0.45%	66.6
Construction of buildings	11.4	9.8	1.6	16.33%	11.3
Specialty trade contractors	48.1	51.3	-3.2	-6.24%	48.8
Manufacturing	24.3	23.5	0.8	3.40%	24.5
Durable goods	13.3	13.1	0.2	1.53%	13.5
Nondurable goods	11.0	10.4	0.6	5.77%	11.0
Service-providing	891.6	815.3	76.3	9.36%	878.3
Private service-providing	790.6	711.9	78.7	11.05%	776.5
Trade, transportation, and utilities	204.4	188.2	16.2	8.61%	199.5
Wholesale Trade	24.4	22.0	2.4	10.91%	24.2
Retail trade	117.0	107.1	9.9	9.24%	113.9
Food and beverage stores	21.6	20.1	1.5	7.46%	21.6
Health and personal care stores	7.2	6.8	0.4	5.88%	6.9
Transportation, Warehousing, and Utilities	63.0	59.1	3.9	6.60%	61.4
Utilities	2.6	2.6	0.0	0.00%	2.6
Transportation and Warehousing	60.4	56.5	3.9	6.90%	58.8
Transit and ground passenger transportation	5.2	5.5	-0.3	-5.45%	5.1
Taxi and limousine service	2.4	2.8	-0.4	-14.29%	2.4
Information	9.9	9.4	0.5	5.32%	9.9
Telecommunications	3.0	3.0	0.0	0.00%	3.0
Financial activities	53.4	51.3	2.1	4.09%	52.4
Finance and insurance	32.0	30.8	1.2	3.90%	31.3
Credit intermediation and related activities	17.7	16.9	0.8	4.73%	17.7
Real estate and rental and leasing	21.4	20.5	0.9	4.39%	21.1
Professional and business services	152.7	133.3	19.4	14.55%	147.7
Professional and technical services	50.7	44.9	5.8	12.92%	49.3
Management of companies and enterprises	21.8	18.7	3.1	16.58%	21.6
Administrative and waste services	80.2	69.7	10.5	15.06%	76.8
Administrative and support services	78.0	67.4	10.6	15.73%	74.5
Employment services	12.9	11.4	1.5	13.16%	12.2
Education and health services	108.4	104.0	4.4	4.23%	105.5
Health care and social assistance	97.2	94.1	3.1	3.29%	94.9
Ambulatory health care services	45.6	44.6	1.0	2.24%	43.9
Hospitals	23.0	23.0	0.0	0.00%	22.9
Leisure and hospitality	227.5	197.6	29.9	15.13%	227.9
Arts, entertainment, and recreation	18.0	15.8	2.2	13.92%	18.2
Amusements, gambling, and recreation	14.4	12.3	2.1	17.07%	14.5
Accommodation and food services	209.5	181.8	27.7	15.24%	209.7
Accommodation	102.7	95.5	7.2	7.54%	103.5
Casino hotels	93.3	88.1	5.2	5.90%	94.0
Gambling industries	4.6	4.3	0.3	6.98%	4.6
Food services and drinking places	106.8	86.3	20.5	23.75%	106.2
Full-service restaurants	51.0	39.9	11.1	27.82%	51.0
Limited-service eating places	46.5	42.2	4.3	10.19%	46.9
Other services	34.3	28.1	6.2	22.06%	33.6
Government	101.0	103.4	-2.4	-2.32%	101.8
Federal	13.8	14.7	-0.9	-6.12%	14.0
State government	20.5	21.0	-0.5	-2.38%	20.7
Local government	66.7	67.7	-1.0	-1.48%	67.1

UNEMPLOYMENT RATES BASED ON UNROUNDED DATA

Employment adjusted by census relationships to reflect number of persons by place of residence.

Information compiled by DETR's Research & Analysis Bureau

Non-Seasonally Adjusted Establishment Based Industrial Employment

Reno MSA (Estimates in Thousands)

	Oct-21	Oct-20	+/- change	% change	Sep-21
Total nonfarm	251.4	240.3	11.1	4.62%	248.5
Goods-producing	45.8	44.2	1.6	3.62%	45.4
Mining and logging	0.5	0.5	0.0	0.00%	0.5
Construction	17.9	18.8	-0.9	-4.79%	17.9
Manufacturing	27.4	24.9	2.5	10.04%	27.0
Service-providing	205.6	196.1	9.5	4.84%	203.1
Private service-providing	175.1	165.7	9.4	5.67%	172.3
Trade, transportation, and utilities	55.9	53.7	2.2	4.10%	54.9
Wholesale Trade	10.3	9.2	1.1	11.96%	10.2
Retail trade	24.9	23.6	1.3	5.51%	24.4
Transportation, Warehousing, and Utilities	20.7	20.9	-0.2	-0.96%	20.3
Information	3.0	2.9	0.1	3.45%	3.0
Financial activities	11.7	11.2	0.5	4.46%	11.6
Finance and insurance	6.8	6.4	0.4	6.25%	6.8
Professional and business services	36.2	33.4	2.8	8.38%	34.7
Administrative and waste services	20.9	18.6	2.3	12.37%	20.0
Education and health services	28.3	27.3	1.0	3.66%	27.8
Leisure and hospitality	33.4	31.2	2.2	7.05%	33.8
Accommodation and food services	28.2	26.7	1.5	5.62%	28.3
Accommodation	10.7	10.7	0.0	0.00%	10.9
Casino hotels	9.4	9.6	-0.2	-2.08%	9.6
Food services and drinking places	17.5	16.0	1.5	9.38%	17.4
Other services	6.6	6.0	0.6	10.00%	6.5
Government	30.5	30.4	0.1	0.33%	30.8
Federal	4.0	4.0	0.0	0.00%	4.0
State government	11.1	11.2	-0.1	-0.89%	11.4
Local government	15.4	15.2	0.2	1.32%	15.4

UNEMPLOYMENT RATES BASED ON UNROUNDED DATA

Employment adjusted by census relationships to reflect number of persons by place of residence.

Information compiled by DETR's Research & Analysis Bureau

Non-Seasonally Adjusted Establishment Based Industrial Employment

Carson City MSA (Estimates in Thousands)

	Oct-21	Oct-20	+/- change	% change	Sep-21
Total nonfarm	31.0	29.8	1.2	4.03%	30.7
Goods-producing	4.2	3.9	0.3	7.69%	4.2
Manufacturing	2.5	2.4	0.1	4.17%	2.5
Service-providing	26.8	25.9	0.9	3.47%	26.5
Private service-providing	17.7	16.8	0.9	5.36%	17.5
Trade, transportation, and utilities	4.9	4.4	0.5	11.36%	4.8
Retail trade	3.8	3.5	0.3	8.57%	3.8
Professional and business services	2.5	2.4	0.1	4.17%	2.5
Leisure and hospitality	3.4	3.2	0.2	6.25%	3.4
Government	9.1	9.1	0.0	0.00%	9.0
Federal	0.6	0.6	0.0	0.00%	0.6
State government	6.6	6.6	0.0	0.00%	6.5
Local government	1.9	1.9	0.0	0.00%	1.9

UNEMPLOYMENT RATES BASED ON UNROUNDED DATA

Employment adjusted by census relationships to reflect number of persons by place of residence.

Information compiled by DETR's Research & Analysis Bureau

Las Vegas (NSA) Last 13 Months (Estimates in Thousands)

	Sep-20	Oct-20	Nov-20	Dec-20	Jan-21	Feb-21	Mar-21	Apr-21	May-21	Jun-21	Jul-21	Aug-21	Sep-21	Oct-21	series12m ma
Total nonfarm	896.4	905.7	911.4	911.5	897.9	905.9	915.9	929.0	947.2	950.2	955.5	960.6	969.8	982.5	936.4
Goods-producing	90.5	90.4	87.5	87.9	85.6	88.6	89.5	90.7	91.9	92.8	91.0	92.9	91.5	90.9	90.1
Mining and logging	0.4	0.4	0.4	0.4	0.4	0.4	0.4	0.4	0.4	0.4	0.4	0.4	0.4	0.4	0.4
Construction	66.6	66.5	63.2	63.5	61.9	64.8	65.9	65.3	66.7	67.5	65.5	67.8	66.6	66.2	65.4
Construction of buildings	10.2	9.8	9.5	9.5	9.4	9.9	10.2	10.1	10.3	10.4	10.6	11.2	11.3	11.4	10.3
Specialty trade contractors	50.4	51.3	47.7	47.9	46.9	49.6	49.6	49.0	50.1	50.7	48.4	50.2	48.8	48.1	48.9
Manufacturing	23.5	23.5	23.9	24.0	23.3	23.4	23.2	25.0	24.8	24.9	25.1	24.7	24.5	24.3	24.3
Durable goods	13.1	13.1	13.1	13.2	12.9	13.0	13.0	13.9	13.7	13.9	14.0	13.7	13.5	13.3	13.4
Nondurable goods	10.4	10.4	10.8	10.8	10.4	10.4	10.2	11.1	11.1	11.0	11.1	11.0	11.0	11.0	10.8
Service-providing	805.9	815.3	823.9	823.6	812.3	817.3	826.4	838.3	855.3	857.4	864.5	867.7	878.3	891.6	846.4
Private service-providing	702.2	711.9	720.3	721.0	710.7	715.1	724.0	735.2	752.0	761.7	768.0	771.1	776.5	790.6	745.5
Trade, transportation, and utilities	183.7	188.2	198.1	200.6	191.7	192.3	193.9	192.8	196.3	200.0	199.0	197.3	199.5	204.4	197.2
Wholesale Trade	22.4	22.0	23.3	23.2	22.5	22.3	22.4	23.2	23.1	23.9	23.6	24.0	24.2	24.4	23.3
Retail trade	103.9	107.1	113.7	113.6	108.9	110.0	110.0	107.4	109.0	112.5	112.5	111.8	113.9	117.0	111.7
Food and beverage stores	20.0	20.1	20.6	20.4	20.3	20.7	20.9	20.6	20.8	21.4	21.5	21.2	21.6	21.6	21.0
Health and personal care stores	6.8	6.8	6.8	6.8	6.8	6.8	6.8	6.9	6.9	6.8	6.7	6.8	6.9	7.2	6.8
Transportation, Warehousing, and Utilities	57.4	59.1	61.1	63.8	60.3	60.0	61.5	62.2	64.2	63.6	62.9	61.5	61.4	63.0	62.1
Utilities	2.6	2.6	2.6	2.6	2.6	2.6	2.6	2.6	2.6	2.6	2.6	2.6	2.6	2.6	2.6
Transportation and Warehousing	54.8	56.5	58.5	61.2	57.7	57.4	58.9	59.6	61.6	61.0	60.3	58.9	58.8	60.4	59.5
Transit and ground passenger transportation	5.5	5.5	5.5	5.4	5.2	5.3	5.4	5.3	5.5	5.4	5.2	5.1	5.1	5.2	5.3
Taxi and limousine service	2.8	2.8	2.8	2.8	2.7	2.7	2.7	2.6	2.8	2.7	2.5	2.5	2.4	2.4	2.6
Information	9.3	9.4	9.6	9.4	9.2	9.2	9.1	9.3	9.4	9.4	9.5	9.8	9.9	9.9	9.5
Telecommunications	3.0	3.0	3.0	3.0	3.0	2.9	3.0	3.0	3.0	3.0	2.9	3.0	3.0	3.0	3.0
Financial activities	50.5	51.3	52.6	53.0	52.6	52.3	52.4	51.8	52.1	51.5	51.4	52.9	52.4	53.4	52.4
Finance and insurance	30.5	30.8	32.0	32.0	31.6	31.5	31.6	31.1	30.9	30.7	30.6	31.4	31.3	32.0	31.4
Credit intermediation and related activities	16.7	16.9	17.6	17.8	17.7	17.4	17.5	17.4	17.3	17.2	17.2	17.7	17.7	17.7	17.5
Real estate and rental and leasing	20.0	20.5	20.6	21.0	21.0	20.8	20.8	20.7	21.2	20.8	20.8	21.5	21.1	21.4	21.0
Professional and business services	131.1	133.3	131.9	131.2	130.7	130.4	132.8	136.7	138.9	140.3	144.8	146.5	147.7	152.7	138.7
Professional and technical services	44.0	44.9	43.0	44.2	44.4	44.5	45.2	46.3	46.7	48.2	49.0	50.0	49.3	50.7	46.8
Management of companies and enterprises	18.8	18.7	19.0	19.2	19.0	19.4	19.7	20.6	20.7	20.9	21.0	20.9	21.6	21.8	20.3
Administrative and waste services	68.3	69.7	69.9	67.8	67.3	66.5	67.9	69.8	71.5	71.2	74.8	75.6	76.8	80.2	71.6
Administrative and support services	65.6	67.4	67.5	65.5	65.2	64.5	65.6	67.6	69.2	68.9	72.5	73.3	74.5	78.0	69.4
Employment services	11.1	11.4	12.7	12.6	11.3	11.1	11.4	11.7	12.0	11.7	11.7	11.9	12.2	12.9	11.9
Education and health services	103.3	104.0	102.6	104.3	105.2	106.2	105.7	105.3	106.0	104.3	103.4	104.2	105.5	108.4	105.1
Health care and social assistance	94.3	94.1	92.3	95.0	96.1	96.7	96.5	95.3	95.7	94.6	94.2	94.4	94.9	97.2	95.2
Ambulatory health care services	44.6	44.6	41.8	42.3	43.5	44.1	44.5	44.0	44.2	43.6	43.3	43.7	43.9	45.6	43.7
Hospitals	22.9	23.0	23.1	23.3	23.0	23.1	22.8	22.8	22.8	22.6	22.7	22.7	22.9	23.0	22.9
Leisure and hospitality	196.4	197.6	197.7	195.5	194.0	197.2	201.9	209.6	216.8	222.8	226.8	227.1	227.9	227.5	212.1
Arts, entertainment, and recreation	16.4	15.8	15.8	16.3	15.9	15.9	16.6	17.7	18.4	18.3	18.3	18.0	18.2	18.0	17.3
Amusements, gambling, and recreation	13.1	12.3	12.3	12.9	12.7	12.6	13.0	13.8	14.6	14.6	14.6	14.5	14.5	14.4	13.7
Accommodation and food services	180.0	181.8	181.9	179.2	178.1	181.3	185.3	191.9	198.4	204.5	208.5	209.1	209.7	209.5	194.8
Accommodation	96.8	95.5	94.7	93.2	91.7	93.1	93.8	95.8	97.6	101.0	102.5	103.0	103.5	102.7	97.7
Casino hotels	89.4	88.1	86.8	86.2	84.8	85.6	86.1	88.1	89.8	92.9	93.7	93.6	94.0	93.3	89.6
Gambling industries	4.6	4.3	4.3	4.5	4.2	4.2	4.3	4.4	4.5	4.4	4.6	4.5	4.6	4.6	4.4
Food services and drinking places	83.2	86.3	87.2	86.0	86.4	88.2	91.5	96.1	100.8	103.5	106.0	106.1	106.2	106.8	97.1
Full-service restaurants	37.4	39.9	40.0	39.3	39.1	40.2	41.6	44.8	47.3	49.3	49.9	50.0	51.0	51.0	45.3
Limited-service eating places	41.7	42.2	42.5	42.0	42.4	42.8	43.6	43.4	45.3	45.9	47.4	47.8	46.9	46.5	44.7
Other services	27.9	28.1	27.8	27.0	27.3	27.5	28.2	29.7	32.5	33.4	33.1	33.3	33.6	34.3	30.6
Government	103.7	103.4	103.6	102.6	101.6	102.2	102.4	103.1	103.3	95.7	96.5	96.6	101.8	101.0	100.9
Federal	15.4	14.7	14.3	14.4	13.7	14.0	13.9	14.2	14.2	14.1	14.2	14.0	14.0	13.8	14.1
State government	21.0	21.0	21.0	20.9	20.7	20.8	20.7	20.7	20.6	18.4	17.7	17.7	20.7	20.5	20.0
Local government	67.3	67.7	68.3	67.3	67.2	67.4	67.8	68.2	68.5	63.2	64.6	64.9	67.1	66.7	66.8

UNEMPLOYMENT RATES BASED ON UNROUNDED DATA

Employment adjusted by census relationships to reflect number of persons by place of residence.

Information compiled by DETR's Research & Analysis Bureau

Reno MSA (NSA) Last 13 Months (Estimates in Thousands)

	Sep-20	Oct-20	Nov-20	Dec-20	Jan-21	Feb-21	Mar-21	Apr-21	May-21	Jun-21	Jul-21	Aug-21	Sep-21	Oct-21	series12m a															
Total nonfarm	0	238.	3	240.	2	242.	4	243.	8	239.	2	242.	5	242.	7	243.	0	246.	1	246.	0	245.	3	246.	5	248.	4	251.	8	244.
Goods-producing	43.9	44.2	43.5	43.3	43.2	42.7	42.5	43.2	44.0	44.6	44.8	45.1	45.4	45.8	44.0	0.5	0.5	0.5	0.5	0.5	0.5	0.5	0.5	0.5	0.5	0.5	0.5	0.5	0.5	
Mining and logging	0.5	0.5	0.5	0.5	0.5	0.5	0.5	0.5	0.5	0.5	0.5	0.5	0.5	0.5	0.5	0.5	0.5	0.5	0.5	0.5	0.5	0.5	0.5	0.5	0.5	0.5	0.5	0.5	0.5	
Construction	19.0	18.8	17.6	17.6	17.6	17.1	16.4	16.2	17.2	17.6	17.8	17.7	18.0	17.9	17.9	17.4	24.4	24.9	25.4	25.2	25.6	25.8	25.5	25.9	26.3	26.6	27.0	27.4	26.1	
Manufacturing	24.4	24.9	25.4	25.2	25.6	25.8	25.8	25.5	25.9	26.3	26.6	26.6	27.0	27.4	26.1	194.	196.	198.	200.	196.	199.	200.	200.	202.	201.	200.	201.	203.	205.	200.
Service-providing	1	1	7	1	6	5	0	5	0	5	2	2	1	6	8	1	1	7	1	6	5	0	5	2	2	1	6	8	200.	
Private service-providing	6	163.	7	165.	2	168.	7	169.	1	167.	0	169.	2	169.	0	170.	4	171.	5	172.	3	173.	6	173.	3	172.	1	175.	9	170.
Trade, transportation, and utilities	53.3	53.7	55.0	56.5	55.0	54.5	54.5	54.8	55.1	55.6	55.1	55.2	54.9	55.9	55.2	9.4	9.2	9.7	9.7	9.5	9.5	9.6	9.9	10.0	10.2	10.2	10.2	10.3	9.9	
Wholesale Trade	9.4	9.2	9.7	9.7	9.5	9.5	9.6	9.9	10.0	10.2	10.2	10.2	10.2	10.3	10.3	20.3	20.9	21.6	22.7	21.9	21.2	21.0	20.7	20.9	20.6	20.2	20.4	20.3	20.7	
Retail trade	23.6	23.6	23.7	24.1	23.6	23.8	23.9	24.2	24.2	24.8	24.7	24.6	24.4	24.9	24.2	20.3	20.9	21.6	22.7	21.9	21.2	21.0	20.7	20.9	20.6	20.2	20.4	20.3	20.7	
Transportation, Warehousing, and Utilities	20.3	20.9	21.6	22.7	21.9	21.2	21.0	20.7	20.9	20.6	20.2	20.4	20.3	20.7	21.0	2.9	2.9	3.0	2.9	3.0	3.0	3.0	3.0	3.0	3.0	3.0	3.0	3.0	3.0	
Information	2.9	2.9	2.9	3.0	2.9	3.0	3.0	3.0	3.0	3.0	3.0	3.0	3.0	3.0	3.0	11.0	11.2	10.9	11.1	11.2	11.2	11.3	11.4	11.2	11.3	11.6	11.6	11.7	11.3	
Financial activities	11.0	11.2	10.9	11.1	11.2	11.2	11.2	11.3	11.4	11.2	11.3	11.6	11.6	11.7	11.3	6.3	6.4	6.1	6.3	6.4	6.4	6.4	6.5	6.4	6.5	6.6	6.8	6.8	6.5	
Finance and insurance	6.3	6.4	6.1	6.3	6.4	6.4	6.4	6.5	6.5	6.4	6.5	6.6	6.8	6.5	6.5	32.2	33.4	35.1	35.1	34.8	36.0	35.8	35.4	35.2	34.7	35.5	35.6	34.7	36.2	
Professional and business services	32.2	33.4	35.1	35.1	34.8	36.0	35.8	35.4	35.2	34.7	35.5	35.6	34.7	36.2	35.3	17.7	18.6	20.3	19.9	19.3	19.6	20.0	20.0	20.2	20.0	20.5	20.6	20.0	20.9	
Administrative and waste services	17.7	18.6	20.3	19.9	19.3	19.6	20.0	20.0	20.2	20.0	20.5	20.6	20.0	20.1	20.1	27.1	27.3	27.5	28.1	28.1	28.5	28.1	28.0	27.6	27.5	27.6	27.8	28.3	27.9	
Education and health services	27.1	27.3	27.5	28.1	28.1	28.5	28.1	28.1	28.0	27.6	27.5	27.6	27.8	28.3	27.9	31.1	31.2	31.0	30.1	29.3	29.9	30.7	31.3	32.5	34.1	34.6	34.2	33.8	33.4	
Leisure and hospitality	31.1	31.2	31.0	30.1	29.3	29.9	30.7	31.3	32.5	34.1	34.6	34.2	33.8	33.4	32.1	26.6	26.7	26.4	26.0	25.1	25.7	26.3	26.4	27.0	28.0	28.4	28.5	28.3	28.2	
Accommodation and food services	26.6	26.7	26.4	26.0	25.1	25.7	26.3	26.4	27.0	28.0	28.4	28.5	28.3	28.2	27.0	10.9	10.7	10.5	10.3	9.7	9.8	9.8	9.9	10.2	10.8	11.0	11.0	10.9	10.7	
Accommodation	10.9	10.7	10.5	10.3	9.7	9.8	9.8	9.9	10.2	10.8	11.0	11.0	10.9	10.7	10.4	9.8	9.6	9.5	9.2	8.7	8.7	8.7	8.8	9.0	9.5	9.7	9.6	9.4	9.2	
Casino hotels	9.8	9.6	9.5	9.2	8.7	8.7	8.7	8.8	9.0	9.5	9.7	9.7	9.6	9.4	9.2	15.7	16.0	15.9	15.7	15.4	15.9	16.5	16.5	16.8	17.2	17.4	17.5	17.4	16.6	
Food services and drinking places	15.7	16.0	15.9	15.7	15.4	15.9	16.5	16.5	16.8	17.2	17.4	17.5	17.4	17.5	16.6	6.0	6.0	5.8	5.8	5.8	5.9	5.9	6.1	6.2	6.3	6.4	6.5	6.6	6.1	
Other services	6.0	6.0	5.8	5.8	5.8	5.9	5.9	6.1	6.2	6.3	6.4	6.5	6.6	6.1	30.5	30.4	30.5	30.4	29.5	30.5	30.8	30.5	30.6	29.0	26.9	27.6	30.8	30.5	29.8	
Government	30.5	30.4	30.5	30.4	29.5	30.5	30.8	30.5	30.6	29.0	26.9	27.6	30.8	30.5	29.8	4.2	4.0	4.0	4.0	3.9	3.9	4.0	4.0	4.0	4.0	4.0	4.0	4.0	4.0	
Federal	4.2	4.0	4.0	4.0	3.9	3.9	4.0	4.0	4.0	4.0	4.0	4.0	4.0	4.0	4.0	11.1	11.2	11.2	11.0	10.6	11.0	11.1	11.1	10.9	9.4	9.3	9.3	11.4	11.1	
State government	11.1	11.2	11.2	11.0	10.6	11.0	11.1	11.1	10.9	9.4	9.3	9.3	11.4	11.1	10.6	15.2	15.2	15.3	15.4	15.0	15.6	15.7	15.4	15.7	15.6	13.6	14.3	15.4	15.4	
Local government	15.2	15.2	15.3	15.4	15.0	15.6	15.7	15.4	15.7	15.6	13.6	14.3	15.4	15.4	15.2															

UNEMPLOYMENT RATES BASED ON UNROUNDED DATA

Employment adjusted by census relationships to reflect number of persons by place of residence.

Information compiled by DETR's Research & Analysis Bureau

Carson City MSA (NSA) Last 13 Months (Estimates in Thousands)

	Sep-20	Oct-20	Nov-20	Dec-20	Jan-21	Feb-21	Mar-21	Apr-21	May-21	Jun-21	Jul-21	Aug-21	Sep-21	Oct-21	series12m ma
Total nonfarm	30.0	29.8	29.6	29.7	29.4	29.8	30.0	30.3	30.4	30.7	30.7	30.9	30.7	31.0	30.3
Goods-producing	3.9	3.9	3.8	3.8	3.8	3.8	3.9	3.9	4.0	4.2	4.2	4.2	4.2	4.2	4.0
Manufacturing	2.4	2.4	2.4	2.4	2.4	2.4	2.4	2.4	2.4	2.5	2.5	2.5	2.5	2.5	2.4
Service-providing	26.1	25.9	25.8	25.9	25.6	26.0	26.1	26.4	26.4	26.5	26.5	26.7	26.5	26.8	26.3
Private service-providing	16.8	16.8	16.7	16.8	16.4	16.8	16.9	17.1	17.2	17.4	17.6	17.7	17.5	17.7	17.1
Trade, transportation, and utilities	4.4	4.4	4.5	4.6	4.5	4.7	4.7	4.7	4.8	4.8	4.8	4.8	4.8	4.9	4.7
Retail trade	3.4	3.5	3.6	3.6	3.5	3.7	3.7	3.7	3.7	3.8	3.7	3.7	3.8	3.8	3.7
Professional and business services	32.2	33.4	35.1	35.1	34.8	36.0	35.8	35.4	35.2	34.7	35.5	35.6	34.7	36.2	35.3
Leisure and hospitality	3.2	3.2	3.1	3.1	3.1	3.1	3.2	3.3	3.4	3.4	3.5	3.5	3.4	3.4	3.3
Government	9.3	9.1	9.1	9.1	9.2	9.2	9.2	9.3	9.2	9.1	8.9	9.0	9.0	9.1	9.1
Federal	0.7	0.6	0.6	0.6	0.5	0.5	0.5	0.6	0.6	0.6	0.6	0.7	0.6	0.6	0.6
State government	6.7	6.6	6.6	6.6	6.8	6.8	6.8	6.8	6.7	6.6	6.4	6.4	6.5	6.6	6.6
Local government	1.9	1.9	1.9	1.9	1.9	1.9	1.9	1.9	1.9	1.9	1.9	1.9	1.9	1.9	1.9

UNEMPLOYMENT RATES BASED ON UNROUNDED DATA

Employment adjusted by census relationships to reflect number of persons by place of residence.

Information compiled by DETR's Research & Analysis Bureau