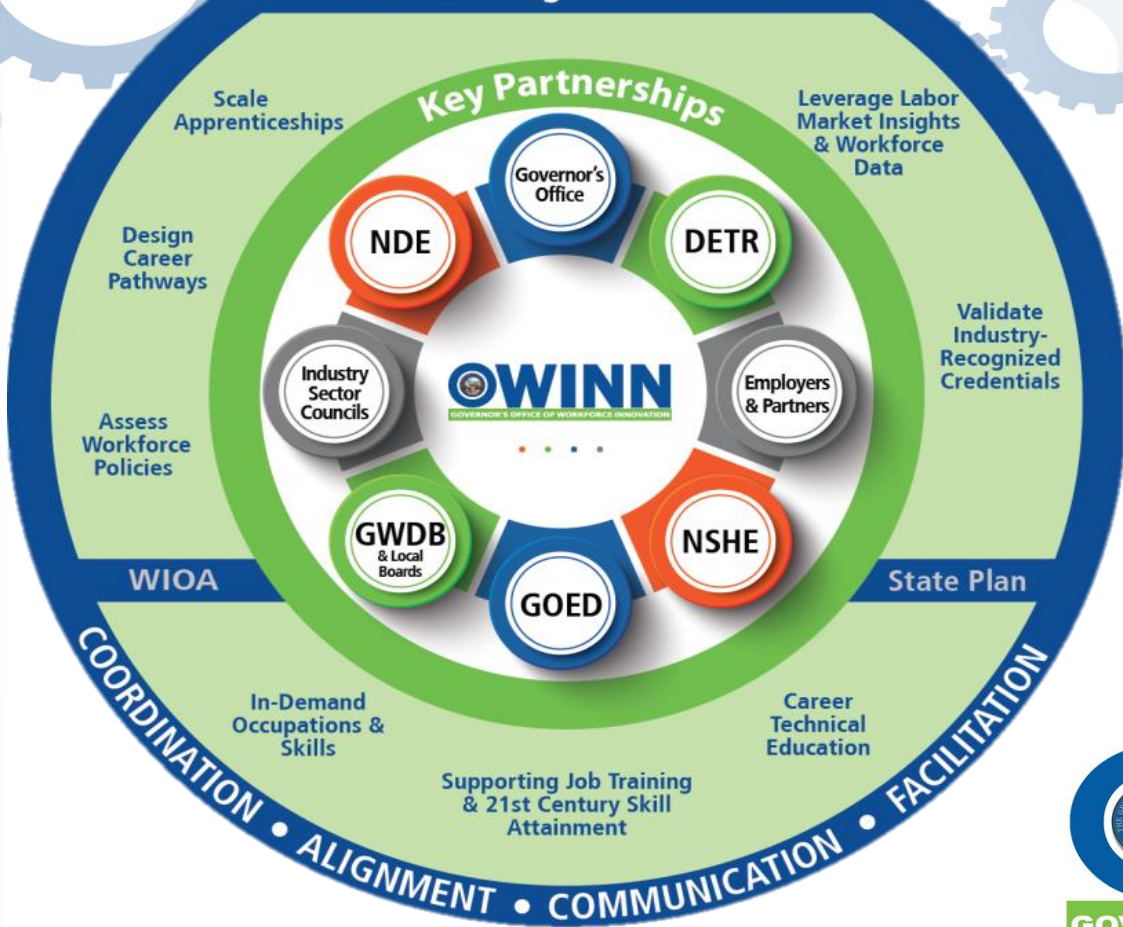


@OWINN29

OWINN Core Strategies & Policies



Office of Governor
Brian Sandoval

Manny Lamarre, Executive Director



Governor's Education to Workforce Summit

CORE PARTNERS



NEW SKILLS FOR YOUTH



Nevada Governor's Office of Science, Innovation and Technology



Nevada Governor's Office of **ECONOMIC DEVELOPMENT**
Empowering Success

SUPPORTING INDUSTRY PARTNERS



workforce **CONNECTIONS**
PEOPLE. PARTNERSHIPS. POSSIBILITIES.

Connecting Employers to a Ready Workforce



chamber of commerce
RENO + SPARKS



ECONOMIC DEVELOPMENT AUTHORITY
OF WESTERN NEVADA

"THE BOTTOM LINE IS THAT AN UNPREPARED WORKFORCE INHIBITS OUR ECONOMIC GROWTH, AND PREVENTS TOO MANY OF OUR CITIZENS FROM OBTAINING THE JOBS THEY DESERVE... MY VISION FOR OUR STATE IS TO PUT ALL NEVADANS, REGARDLESS OF AGE OR CIRCUMSTANCE, ON A CAREER PATHWAY TOWARD SUCCESS."

- GOVERNOR SANDOVAL, JAN. 17TH STATE OF THE STATE ADDRESS



*Strategic Changes
to Expand Work-
Based Learning in
the New Nevada*

*"How can we get
experience if every job
we apply for requires
experience" –Student*



Summit's Objective

Inform employers and educators on practical strategies to build and integrate career pathways within their organization

Highlight Nevada's progress on education and work-based learning

Explore Nevada's LifeWorks efforts to connect young adults to high-demand industries

Workshops

Designing Work-Based Learning for Students

Strategies for Employers to Incorporate Work-Based Learning

Aligning Career Pathway Systems & Redesigning Career
Technical Education

Defining Work-Based Learning

*Modernization of
Summer Jobs*



Education



Work-Based Learning

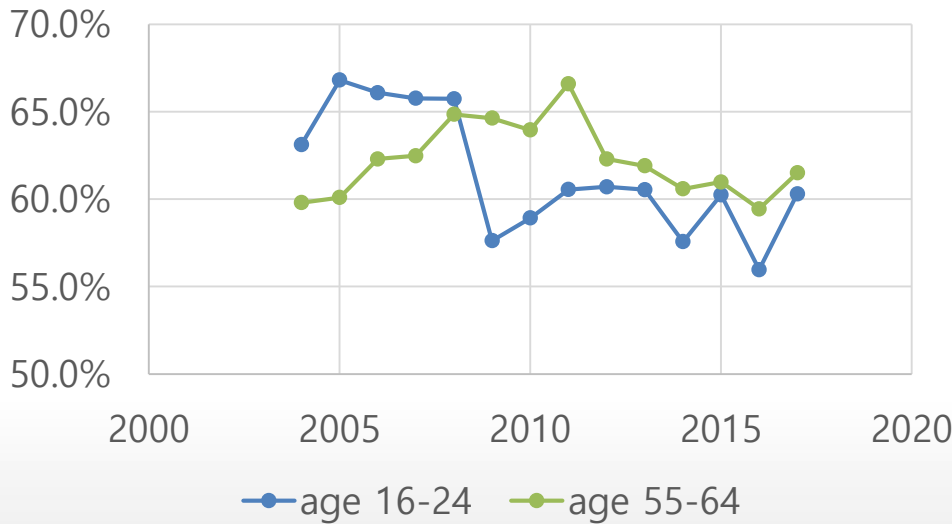


Work-based learning provides students with authentic work experiences where they apply and develop employability and technical skills that support success in careers and post-secondary education.” –National Governor’s Association

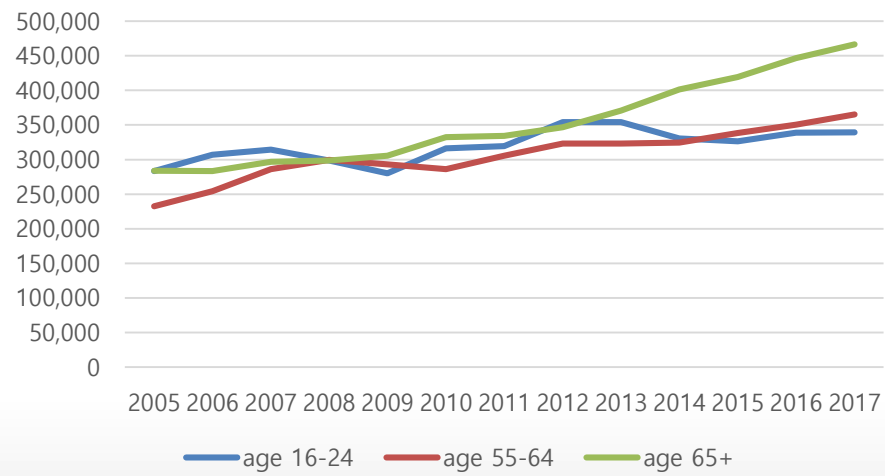
High-quality work-based learning incorporate: Academic alignment, employer engagement, pursuit of industry-recognized credentials, & connection to employment

Labor Force Participation Rate & Non-institution Population

State of Nevada Labor Force Participation Rate by Age (Annual Average)



State of Nevada civilian non-institutional population 16+ (annual average)



Types of Work-Based Learning



*Job shadow,
career fairs,*



Guest speaker



*Paid internships
or co-ops*

*Apprenticeships
– Registered,
pre or youth
apprenticeships*

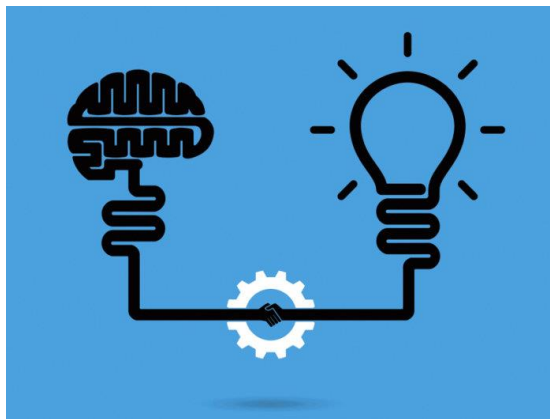


Why Companies Should Consider Work-Based Learning

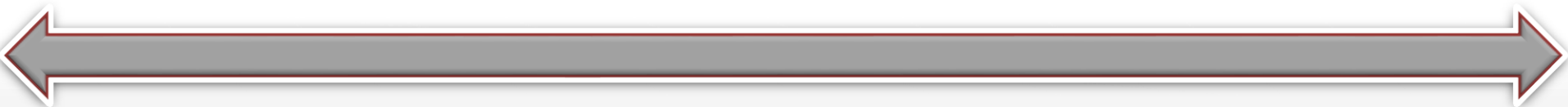
CAPACITY



INNOVATION



PRODUCTIVITY



NEVADA'S BIG GOAL

55,000!



exploration discovery
Internships communication
opportunity career
Apprenticeship **Work**
attitude workplace preparation **Based** skills connections
Work-Ethics
job **Learning**
networking Real-World
Mentorships experience

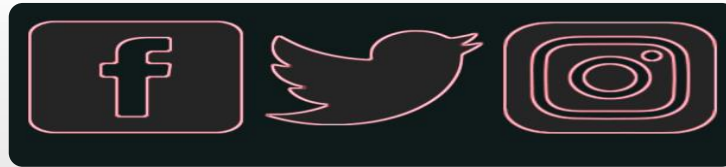
WE CAN DO IT!



Follow Us

@NevadaReady

#LifeWorks #WBL



@OWINN29

#YouthWorkforce